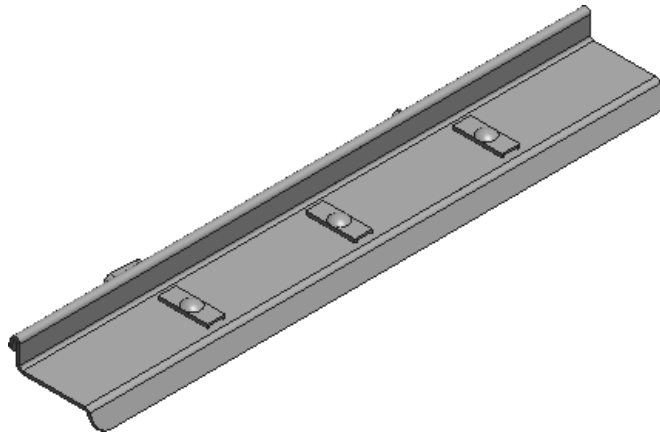
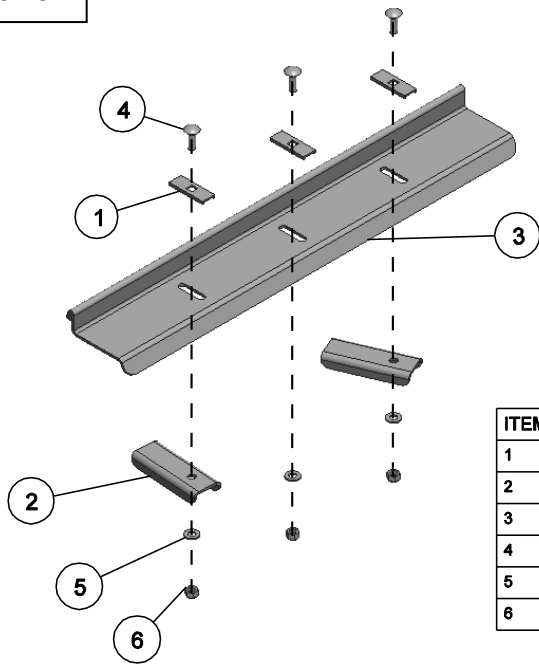


**DA0089-15, DA0090-15, DA0091-15, & DA0092-15
DOCK DOUBLE HANGER BRACKETS 2', 4', 6', & 8' WIDTHS****ASSEMBLY**

INSERT A STAINLESS STEEL CARRIAGE BOLT THRU THE SQUARE HOLE IN THE DECK CLAMP. SLIDE THE DECK CLAMP OVER THE DECK PLANK LEGS WITH THE THREADED END OF THE CARRIAGE BOLT BETWEEN THE PLANKS. MAKE SURE TO POSITION THESE TO ALIGN WITH THE SLOTS IN THE HANGER BRACKET.

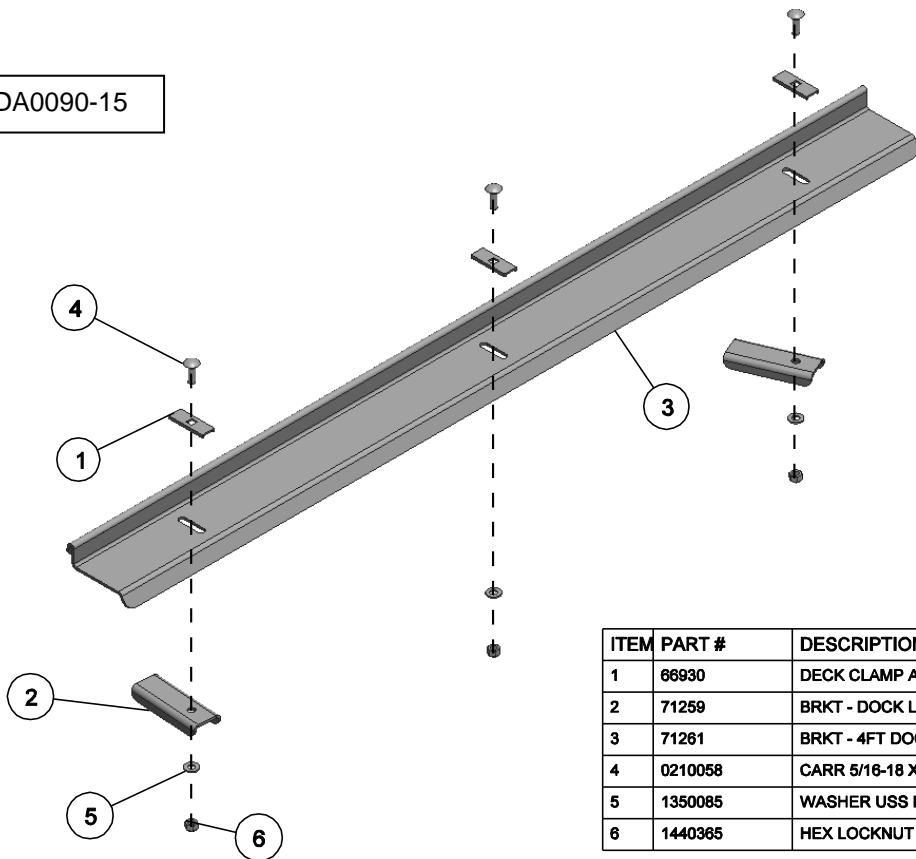
PLACE THE HANGER BRACKET OVER THE THREADED ENDS OF THE STAINLESS STEEL CARRIAGE BOLTS. SECURE THE CENTER WITH A STAINLESS STEEL FLAT WASHER AND A BRASS LOCKNUT WITH NYLON INSERT. ON THE OUTSIDE BOLTS SLIDE A LATCH BRACKET OVER THE BOLT WITH THE FORMED LEGS AWAY FROM THE HANGER BRACKET AND SECURE THESE WITH STAINLESS STEEL FLAT WASHERS AND BRASS LOCKNUTS WITH NYLON INSERT

DA0089-15



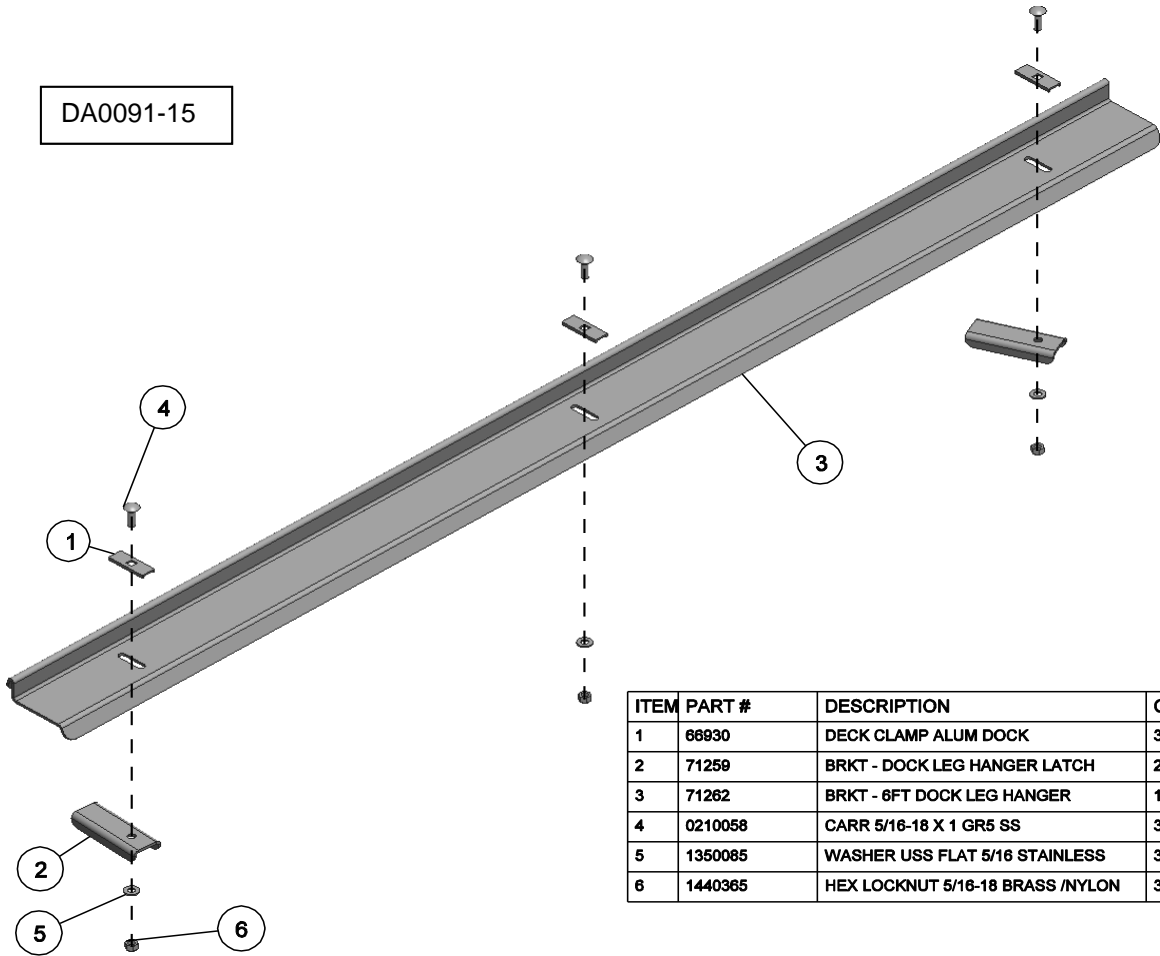
ITEM	PART #	DESCRIPTION	QTY	NOTE
1	66930	DECK CLAMP ALUM DOCK	3	
2	71259	BRKT - DOCK LEG HANGER LATCH	2	
3	71260	BRKT - 2FT DOCK LEG HANGER	1	
4	0210058	CARR 5/16-18 X 1 GR5 SS	3	
5	1350085	WASHER USS FLAT 5/16 STAINLESS	3	
6	1440365	HEX LOCKNUT 5/16-18 BRASS /NYLON	3	

DA0090-15



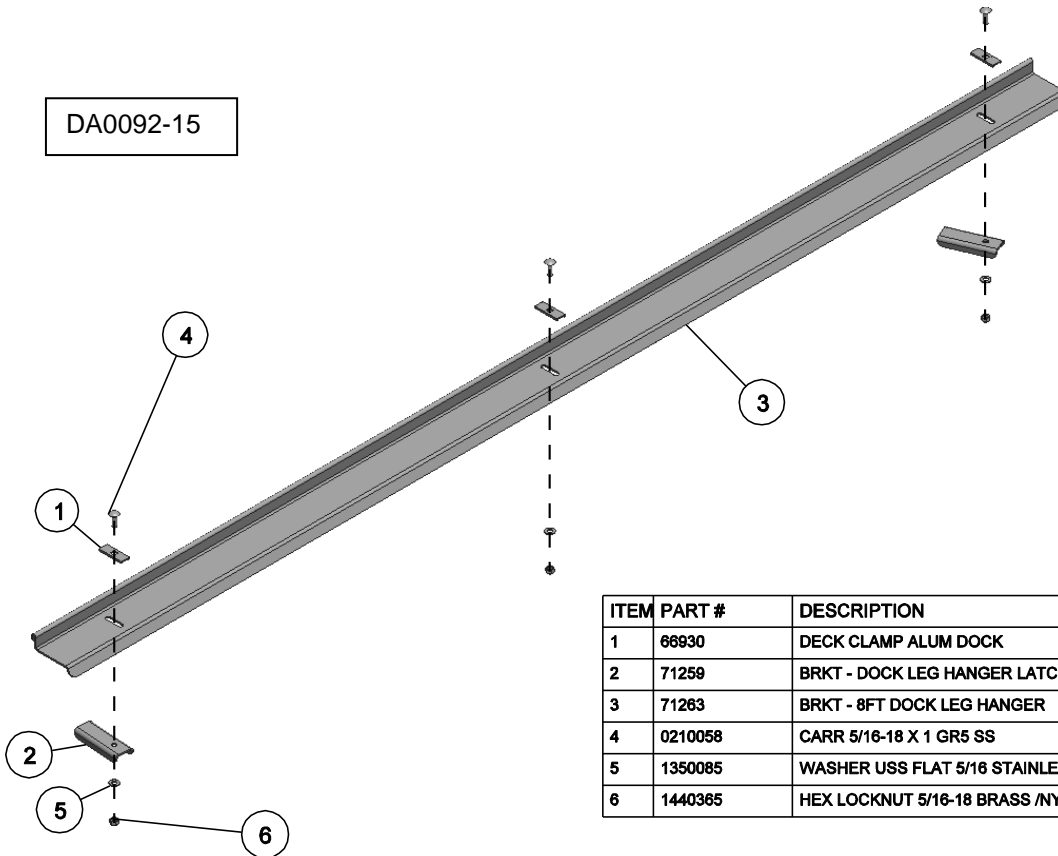
ITEM	PART #	DESCRIPTION	QTY	NOTE
1	66930	DECK CLAMP ALUM DOCK	3	
2	71259	BRKT - DOCK LEG HANGER LATCH	2	
3	71261	BRKT - 4FT DOCK LEG HANGER	1	
4	0210058	CARR 5/16-18 X 1 GR5 SS	3	
5	1350085	WASHER USS FLAT 5/16 STAINLESS	3	
6	1440365	HEX LOCKNUT 5/16-18 BRASS /NYLON	3	

DA0091-15



ITEM	PART #	DESCRIPTION	QTY	NOTE
1	66930	DECK CLAMP ALUM DOCK	3	
2	71259	BRKT - DOCK LEG HANGER LATCH	2	
3	71262	BRKT - 6FT DOCK LEG HANGER	1	
4	0210058	CARR 5/16-18 X 1 GR5 SS	3	
5	1350085	WASHER USS FLAT 5/16 STAINLESS	3	
6	1440365	HEX LOCKNUT 5/16-18 BRASS /NYLON	3	

DA0092-15



ITEM	PART #	DESCRIPTION	QTY	NOTE
1	66930	DECK CLAMP ALUM DOCK	3	
2	71259	BRKT - DOCK LEG HANGER LATCH	2	
3	71263	BRKT - 8FT DOCK LEG HANGER	1	
4	0210058	CARR 5/16-18 X 1 GR5 SS	3	
5	1350085	WASHER USS FLAT 5/16 STAINLESS	3	
6	1440365	HEX LOCKNUT 5/16-18 BRASS /NYLON	3	

