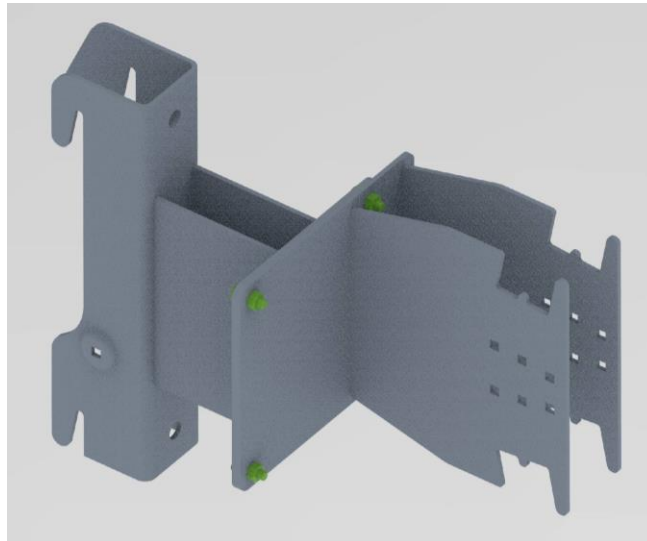
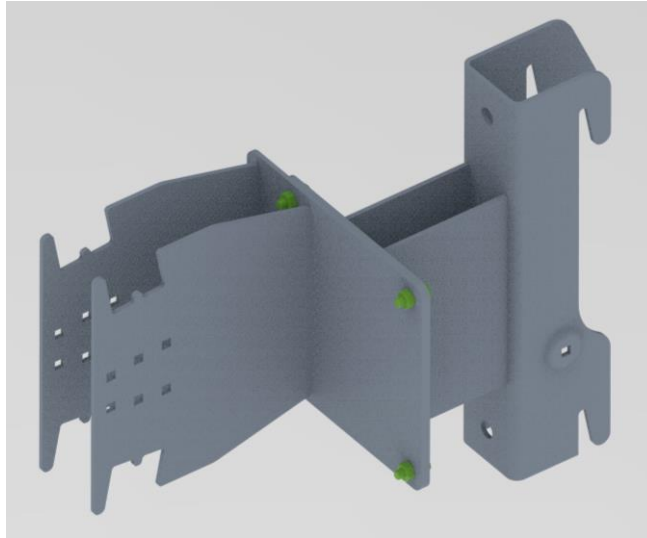


DA0100 Offset Leg Frame Connector

For Classic Dock side-by-side layouts when leg frames are not aligned



Application

Using this 2-piece connector, a free-standing dock section may be joined to a primary dock run section on the long side, at the point where the leg frames of the two sections are not aligned (see below). This connector may be used on either the right or left side of the primary dock section depending on how it is assembled. They attach to the accessory bracket tabs on the leg frames to create a secure joint.

Note: Both ends of the free-standing section must be connected to the primary section. The opposite end should be connected with either WDSC or DA0068-00 Dock Leg Side Connectors.

Tools

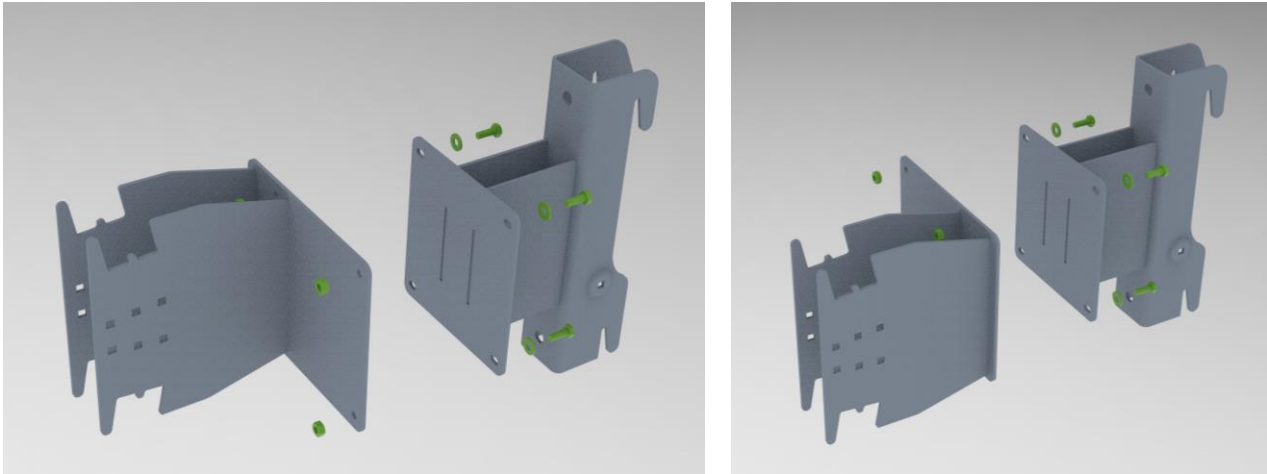
Cordless drill, 7/16" nut driver and/or 7/16" hex bit, wrench

1 – Organize Parts

Open the hardware box and bag, and sort the hardware and other contents by size.

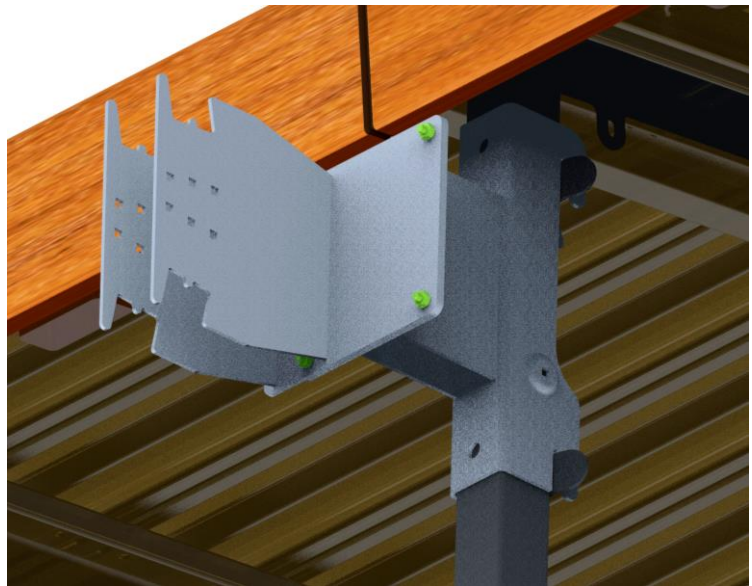
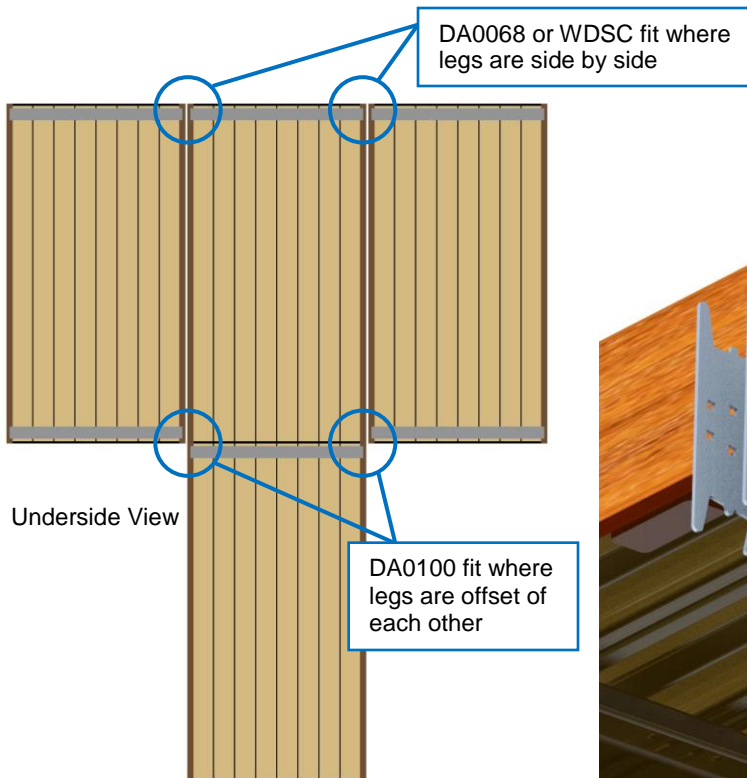
2 – Attach the Brackets

Use a cordless drill with a 7/16" hex bit to tighten the nuts and bolts and connect the two dock braces. It can be right or left depending which way is needed.



3 – Place the Dock Brace

Hang DA0100 on the appropriate dock leg.



4 – Put in the Dock Section

Fully assemble the free-standing section with both its leg frames. Attach one leg frame to the Offset Connector by lowering the upper Accessory Tab into the wide slot as shown. Then level it with the leg on the other side of the dock section.

