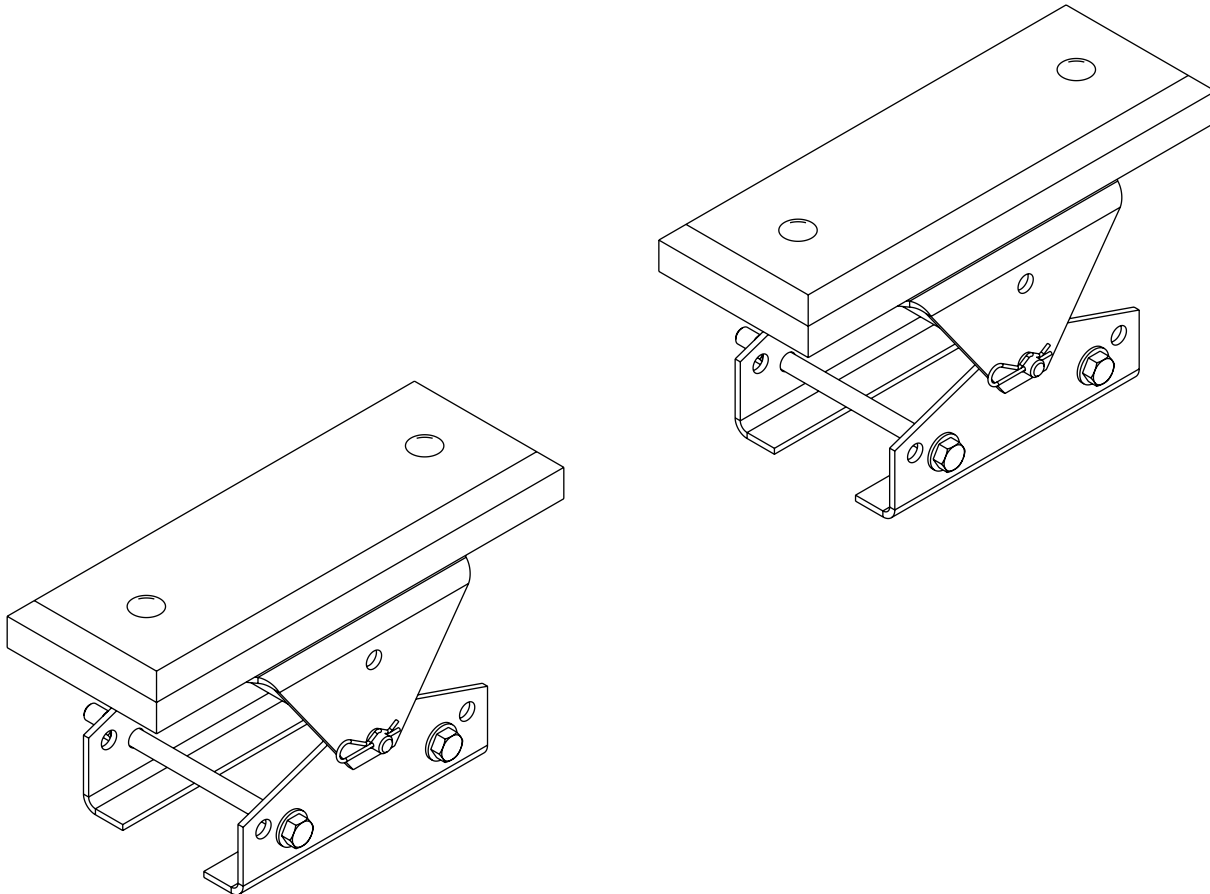


SSHA Cradle Bracket (Self-aligning) For All Steel Hoists

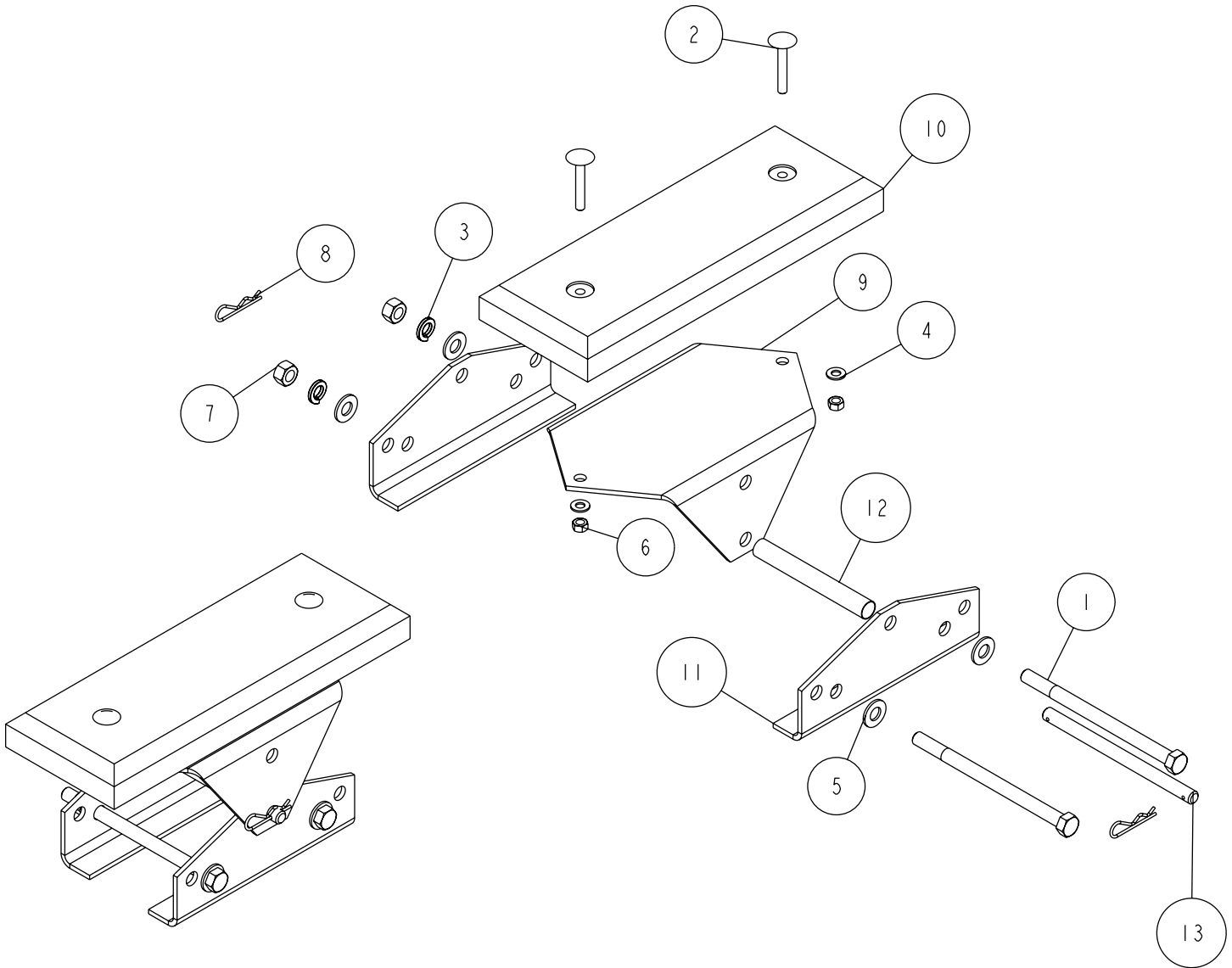


Assembly Instructions

Determine which end of the boat hoist platform will be at the bow end of the boat. Place a 1/2" flat washer on the 1/2" X 7-1/2" hex bolts provided, then insert into the holes in the SSHA mounting brackets. Place the 1/2" washers, 1/2" lock washer and 1/2" hex nuts on the 7-1/2" hex bolts. Now place the cradle bracket on the platform so that the lips of the mounting brackets are below the "H" platform flange and that the cradle bracket is resting on the 1/2" hex bolts just mentioned on the top of the platform.

Repeat for other side.

Align the pivot holes on the wood support bracket with the hole on the cradle bracket, begin to insert pin, slide spacer inside the cradle mount brackets and slide pin through aligning with the other side. Once through, insert hitch pin clips. Adjustment may be made with pivot pin being placed in top or bottom hole and sliding assemblies in and out on platform. Tighten all hardware.



ITEM	PART #	DESCRIPTION	QTY	NOTE
1	0120142	HH 1/2-13 X 7 1/2 CS GR5	4	
2	0210070	CARR 5/16-18 X 2 1/4 STEPHD GR5	4	
3	1310040	LOCKWASHER 1/2 S/T MED	4	
4	1310085	WASHER USS FLAT 5/16	4	
5	1340100	WASHER USS FLAT 1/2	8	
6	1410069	HEX NUT FINISH 5/16-18	4	
7	1440159	HEX NUT FINISH 1/2-13	4	
8	1540300	HITCH PIN CLIP #7	4	
9	a144	SSHA WOOD SUPPORT	2	
10	A145	CEDARWOOD 15IN SSHA	2	
11	a146	SSHA MOUNTING BRACKETS	4	
12	a147	SPACER TUBE 9/16 X 5 1/2 SSHA	2	
13	ss1186	SSHA PIVOT PIN ZYU	2	

DWG: SSHA	REV: .0
-----------	---------