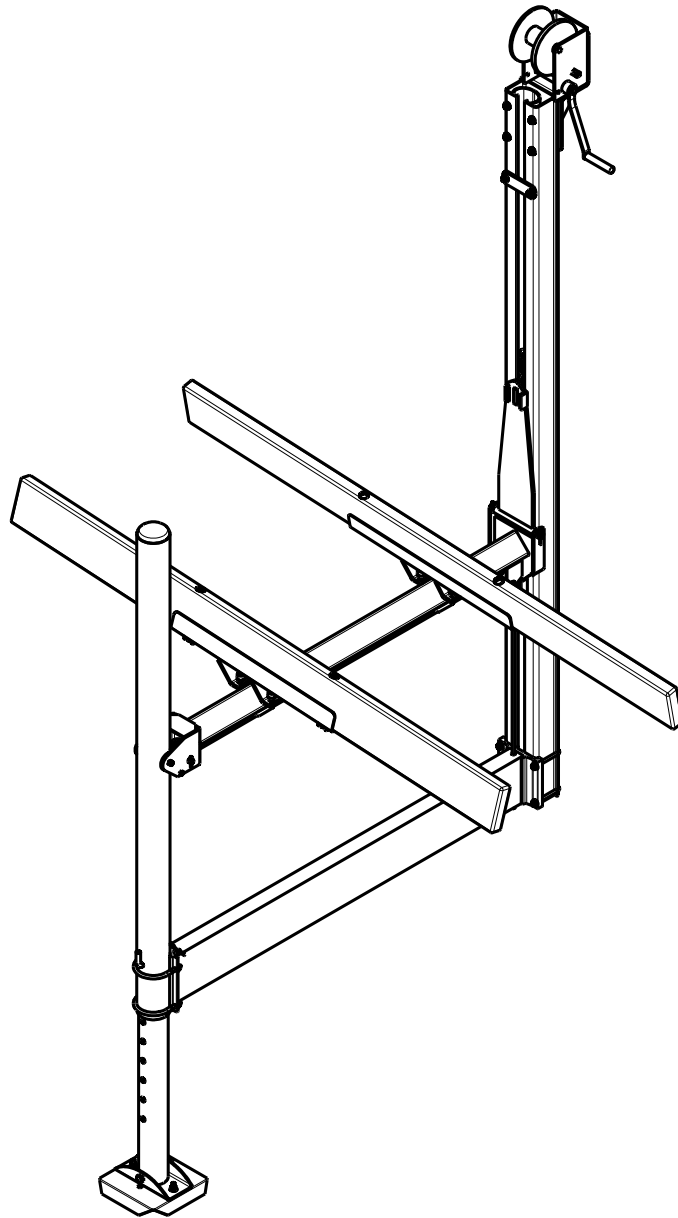


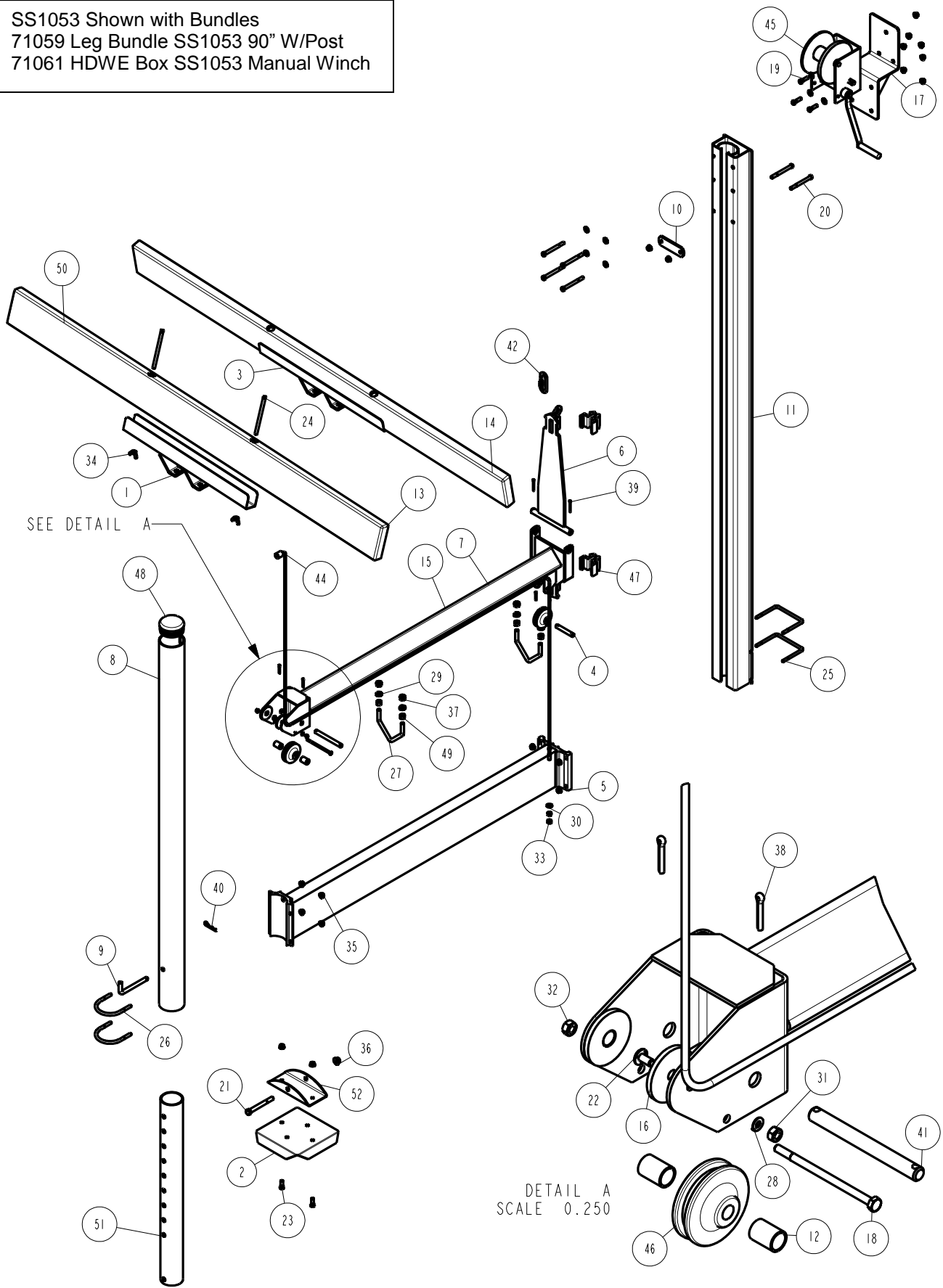
SS1053 - HOIST PWC DOCK MOUNT



Your **ShoreStation** PWC Boat Hoist is designed to give years of dependable service. Following the instructions in the operator's manual will insure its dependability and more important, **YOUR** safety. Read through this entire operator's manual before attempting to operate your hoist. Our goal is your safety - help us help you by knowing and observing the operating precautions and limitations you will find listed herein. If you do not understand any of these instructions, please ask your dealer for his personal attention to your questions.

Midwest Industries, Inc.
Ida Grove, IA 51445

SS1053 Shown with Bundles
 71059 Leg Bundle SS1053 90" W/Post
 71061 HDWE Box SS1053 Manual Winch



ITEM	PART #	DESCRIPTION	QTY	NOTE
1	62538	BUNK CHANNEL WMENT LEFT	1	
2	62550	SQUARE BASE PAD	1	
3	63435	BUNK CHANNEL WMENT RIGHT	1	
4	63732	1/2" PULLEY PIN	1	
5	66003	LOWER FRAME WMENT - DOCK MTG HOIST	1	
6	66006	UPPER LIFT ARM WMENT	1	
7	66014	PLATFORM WELDMENT - DOCK MOUNT	1	
8	66015	GUIDE POST TUBE	1	
9	66016	LEG ADJUSTMENT PIN	1	
10	66019	STOP PLATE	1	
11	66021	WINCH POST EXTRUSION - 90"	1	
12	66023	PULLEY SPACER BUSHING	2	
13	66025	BUNK ASSY LEFT 1053/1053IDS	1	
14	66026	BUNK ASSY RIGHT 1053/1053IDS	1	
15	66033	PLATFORM BUNDLE 1053/1053IDS	1	
16	66034	PLASTIC GUIDE WASHER - 853/853I	2	
17	68509	WINCH MTG BRACKET	1	
18	0110019	HH 1/4-20 X 4 1/2 CS GR5 ZP	1	
19	0110037	HH 3/8-16 X 1 1/4 CS GR5	3	
20	0110059	HH 3/8-16 X 3 3/4 CS GR5	6	
21	0110118	HH 1/2-13 X 4 1/2 CS GR5	1	
22	0120316	SCREW(PROJECTION WELD) 1/4-20 X 1/2	2	
23	0140040	HH 3/8-16 X 1 CS GR5	2	
24	0210139	CARR 3/8-16 X 6 FULL THREAD GR5	4	
25	0310295	SUB 3/8 X 5 3/16 X 3 7/8	2	
26	0320101	3/8-16 X 3 7/8 X 3 7/8 ROUND U-BOLT	2	
27	0330000	1/2-13 X 4 19/32 X 3 3/4 V-BOLT	2	
28	1310020	LOCKWASHER 1/4 S/T MED	2	
29	1310040	LOCKWASHER 1/2 S/T MED	4	
30	1340095	WASHER USS FLAT 3/8	8	
31	1410049	HEX NUT FINISH 1/4-20	2	
32	1410059	HEX LOCKNUT 1/4-20 GRA	1	
33	1410109	HEX NUT 3/8-16	2	
34	1410110	WING NUT 3/8-16	4	
35	1440101	HEX LOCKNUT FLANGE 3/8-16 W/T	19	
36	1440102	HEX LOCKNUT FLANGE 1/2-13 W/T	1	
37	1440159	HEX NUT FINISH 1/2-13	4	
38	1510078	COTTER KEY 3/16 X 1	4	
39	1520082	COTTER KEY 3/16 X 1 1/2	2	
40	1540300	HITCH PIN CLIP #7	1	
41	1910048	PULLEY PIN	1	
42	2210171	CHAIN QUICK LINK W/5/16 OPENING	1	
43	2400022	COVER FOR 2000 WINCH BLUE	1	
44	3110351	CABLE LEVEL STAINLESS 111 1/2IN	1	
45	3110392	WINCH DLB2500A W/102"HDSTRAP&HANDLE	1	
46	3510083	PLATFORM PULLEY W/BRONZE BUSHING	2	
47	3510126	SLIDE BLOCK - PWC DOCK MOUNT	2	
48	3510265	BLACK PLASTIC CAP	1	
49	3810097	SPACER .5151D X 11/16OD X 7/16 LONG	4	
50	3910024	BUNKWOOD 2 X 6 X 12FT FIR	2	
51	A102	ADJUSTABLE LEG 3 1/8OD X 30 1/2	1	
52	A104	ALUM BASE PAD CHANNEL CLAMP	1	

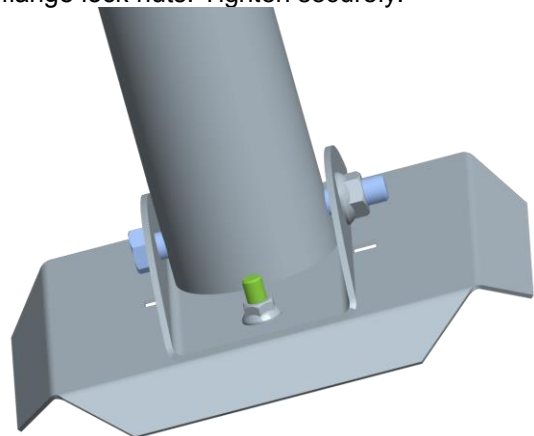
Tools Required

9/16" Socket/Wrench
3/4" Socket/Wrench

Assembly

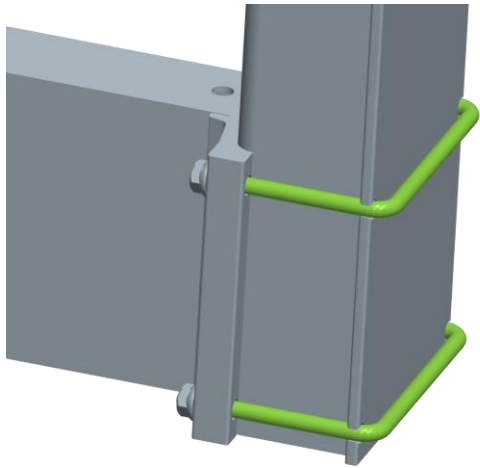
Select the bundles required. Break open the bundles and open boxes and bags and sort parts.

Mount the aluminum base pad channel clamp to the base pad using two (2) 3/8" X 1" hex bolts and two (2) 3/8" flange lock nuts. Tighten securely.

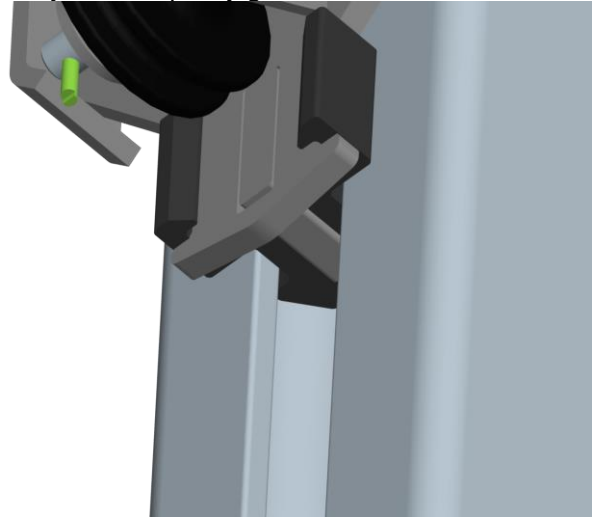


Attach the adjustable leg to the assembled base pad and channel using a 1/2" X 4-1/2" hex bolt and secure with a 1/2" flange lock nut. Tighten only enough to have a couple of threads showing out of the locknut.

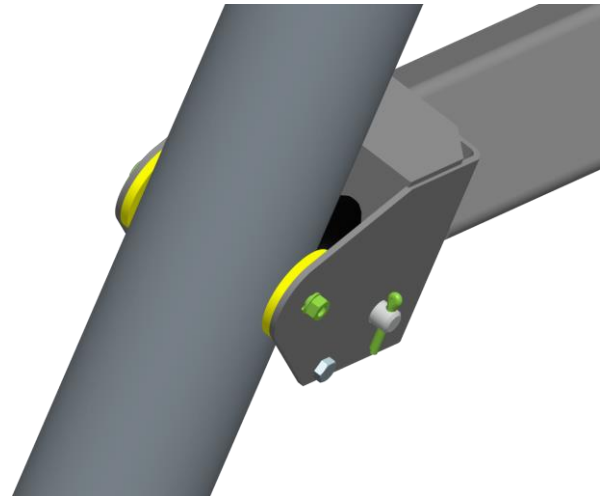
Mount the lower frame weldment to the winch post extrusion, making sure that the leg pin aligning hole is to the top side of the hoist, using two (2) 3/8" X 5-3/16" X 3-7/8" square u-bolts. Slide the u-bolts thru the notches on the bottom of the winch post extrusion, the holes in the weldment and secure with 3/8" flange lock nuts.



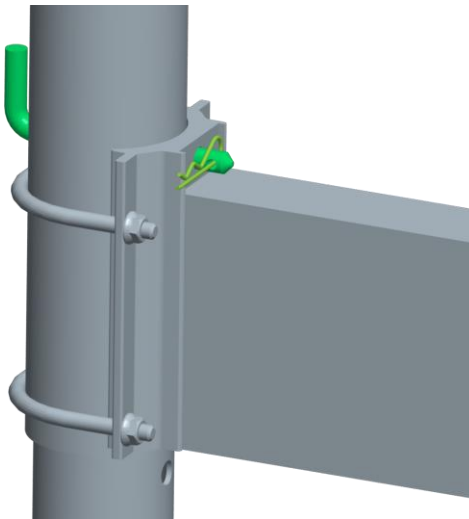
Slide the platform assembly into the winch post extrusion as shown. Make sure that the side of the assembly with the pulley goes in first.



Align the other end to slide down over the guide post.



Mount the guide post tube to the opposite end of the lower frame weldment using a leg adjustment pin and making sure the slot in the guide post is to the inside of the lift. Secure with a hitch pin clip. Also mount the guide post tube to the lower frame tube using two (2) 3/8" X 3-7/8" X 3-7/8" RUB's. Secure with 3/8" flange lock nuts.

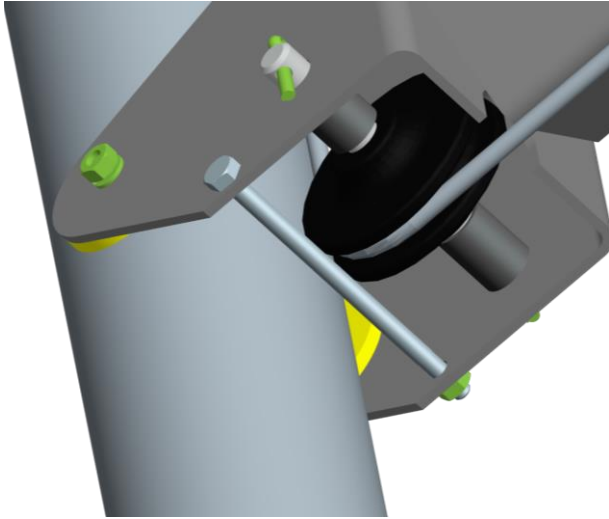


Hook the end of the cable into the slot on the guide post.



Note; Be sure that the cable end is in the guide post tube and the cable is in the notch.

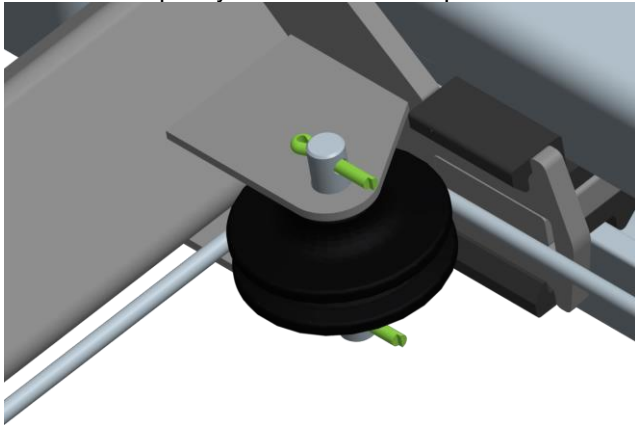
Route the cable down and around the pulley on the platform weldment.



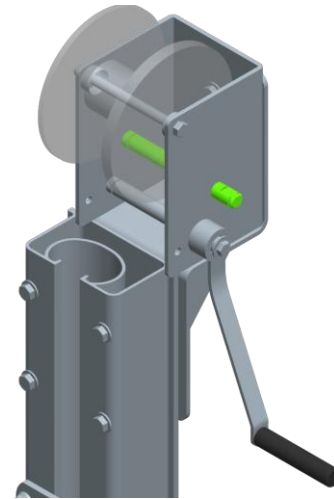
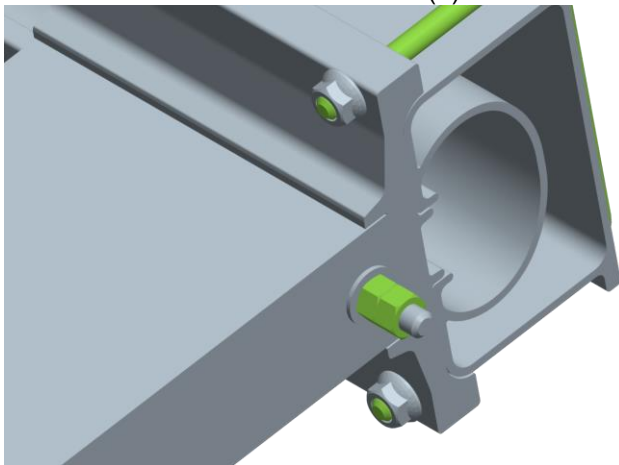
Mount the winch mounting plate to the winch assembly using three (3) 3/8" X 1" hex bolts. Place a 3/8" flat washer on each of the three (3) 3/8" X 1" bolts. Insert the bolts into the slots of the winch base. Align with the mounting holes in the winch mounting bracket. Secure with 3/8" flange lock nuts. Manual winch assembly is shown on next page.

Mount the winch assembly with winch mounting bracket to the winch post extrusion using the four (4) 3/8" X 3-3/4" hex bolts just installed. Place a 3/8" flat washer on each of the four (4) 3/8" X 3-3/4" hex bolts. Insert them into the holes provided in the top of the winch post extrusion. Secure with 3/8" flange lock nuts.

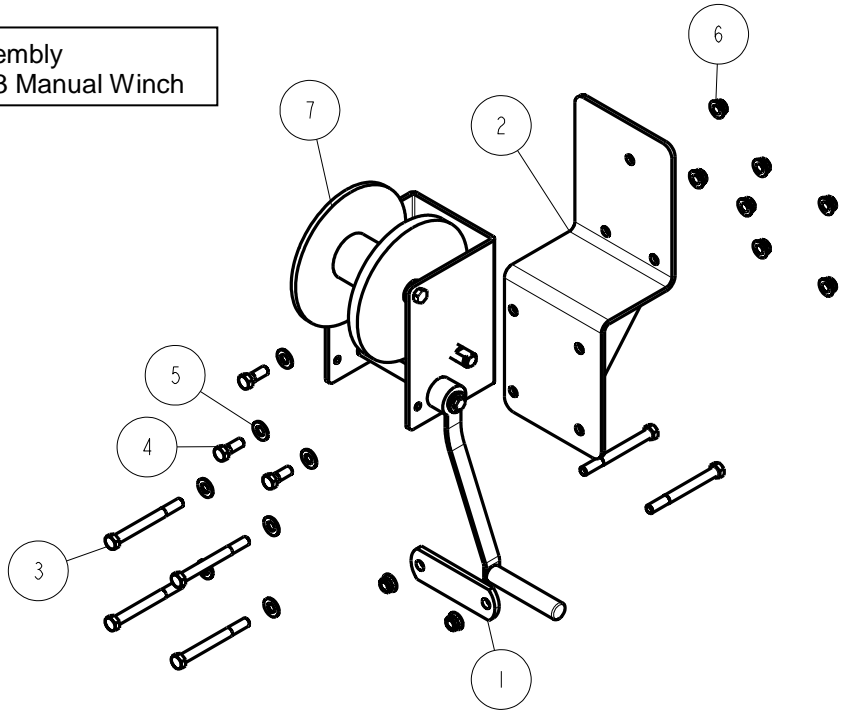
Run the cable across the bottom side of the platform and over the pulley next to the winch post extrusion.



Thread down along the extrusion and thru the holes in the lower frame weldment and secure on the bottom side with a 3/8" flat washer and two (2) 3/8" hex nuts.



Manual Winch Assembly
HDWE Box SS1053 Manual Winch



ITEM	PART #	DESCRIPTION	QTY	NOTE
1	66019	STOP PLATE	1	
2	68509	WINCH MTG BRACKET	1	
3	0110059	HH 3/8-16 X 3 3/4 CS GR5	6	
4	0140040	HH 3/8-16 X 1 CS GR5	3	
5	1340095	WASHER USS FLAT 3/8	7	
6	1440101	HEX LOCKNUT FLANGE 3/8-16 W/T	9	
7	3110392	WINCH DLB2500A W/102"HDSTRAP&HANDLE	1	

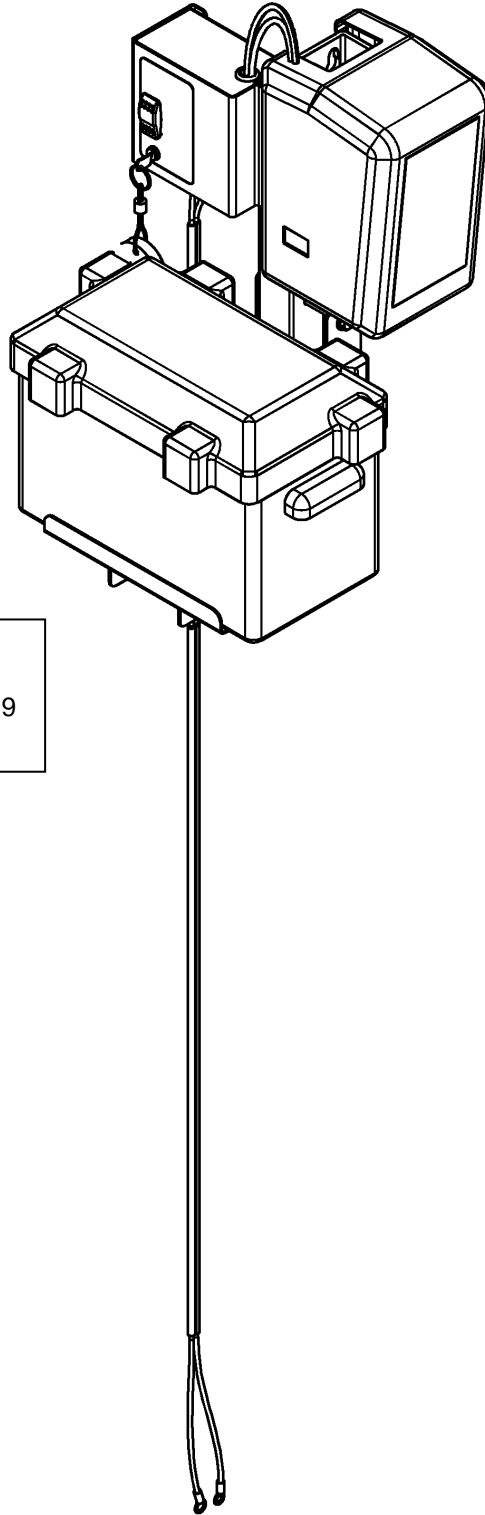


NOTE: The strap must be free of any twisting.

Mount the stop bracket on the winch post extrusion in the set of holes closest to the platform.

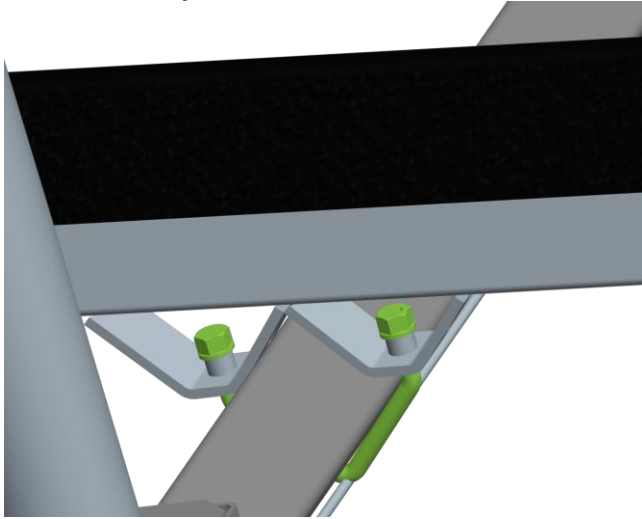


Mount the bunk with brackets onto the platform weldment using one (1) 1/2" v-shaped u-bolts, two (2)



EDS Electric DC Winch Assembly
Assembly and operating
instructions included in the HA0119
kit

spacers, two (2) 1/2" lock washers and two (2) 1/2" hex nuts per bunk as shown. **Note: The short end of bunk from galvanized mounting channel goes to the right of the winch handle.** Repeat on other bunks. Bunks should be spaced to fit your watercraft before tightening. Bunks should also be angled toward the center of the platform. **NOTE: To enter the dock hoist from the other end – reverse the bunk assembly.**



Insert the black plastic cap into the guide post tube.



SAFETY MAINTENANCE

It is recommended that your Shore Station hoist be thoroughly inspected at least once each season:

1. Tighten all bolts.
2. Check pulleys and make sure they are all turning freely.
3. Inspect all cables for fraying, wearing or deteriorating. If any signs appear, replace cables.
4. Check frame thoroughly.
5. Check winch as per manufacturer's specifications.

Safety Tips

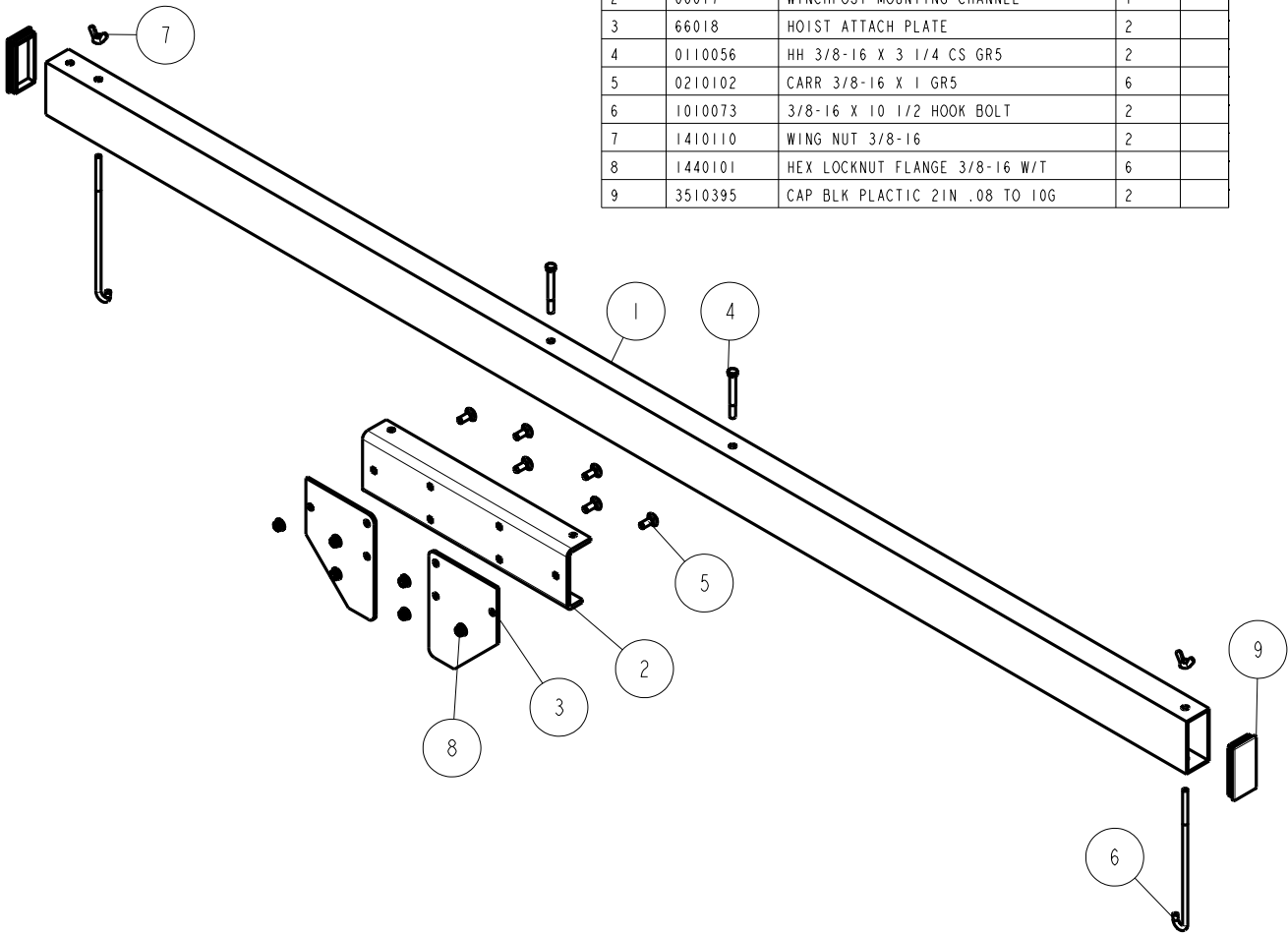
“The best insurance policy is safety”

After the hoist installation is complete, it is important to next check and see that the winch mechanism is functioning properly. This is easily accomplished by raising the empty platform about one-fourth the way up and releasing your grasp on the lift handle. If the winch is operating properly, the clutch brake will automatically hold the platform at any position. Perform this same test in the half, three-fourths and full lift positions. Next, repeat this same procedure with your boat on the hoist. If the lift handle begins to freely spin down from any of these test positions, at no time should you attempt to prevent it from doing so. Such action could result in injury to arms and hands. Instead simply let the platform spin down into the water. Doing so will neither damage your hoist nor your watercraft.

If for some reason your winch mechanism does not function as described call your authorized Shore Station dealer. Do not tamper with the winch mechanism.

Hoist Dock Mount Kit Classic Dock

ITEM	PART #	DESCRIPTION	QTY	NOTE
1	65285	PWC DOCK MOUNT TUBE	1	
2	66017	WINCHPOST MOUNTING CHANNEL	1	
3	66018	HOIST ATTACH PLATE	2	
4	0110056	HH 3/8-16 X 3 1/4 CS GR5	2	
5	0210102	CARR 3/8-16 X 1 GR5	6	
6	1010073	3/8-16 X 10 1/2 HOOK BOLT	2	
7	1410110	WING NUT 3/8-16	2	
8	1440101	HEX LOCKNUT FLANGE 3/8-16 W/T	6	
9	3510395	CAP BLK PLACTIC 2IN .08 TO 10G	2	



Mount the dock mount tube between the dock and bumper. Secure the dock mount tube using a 3/8" X 10-1/2" j-hook hooking from the bottom of the dock leg universal bracket up. Secure with a 3/8" wing nut.

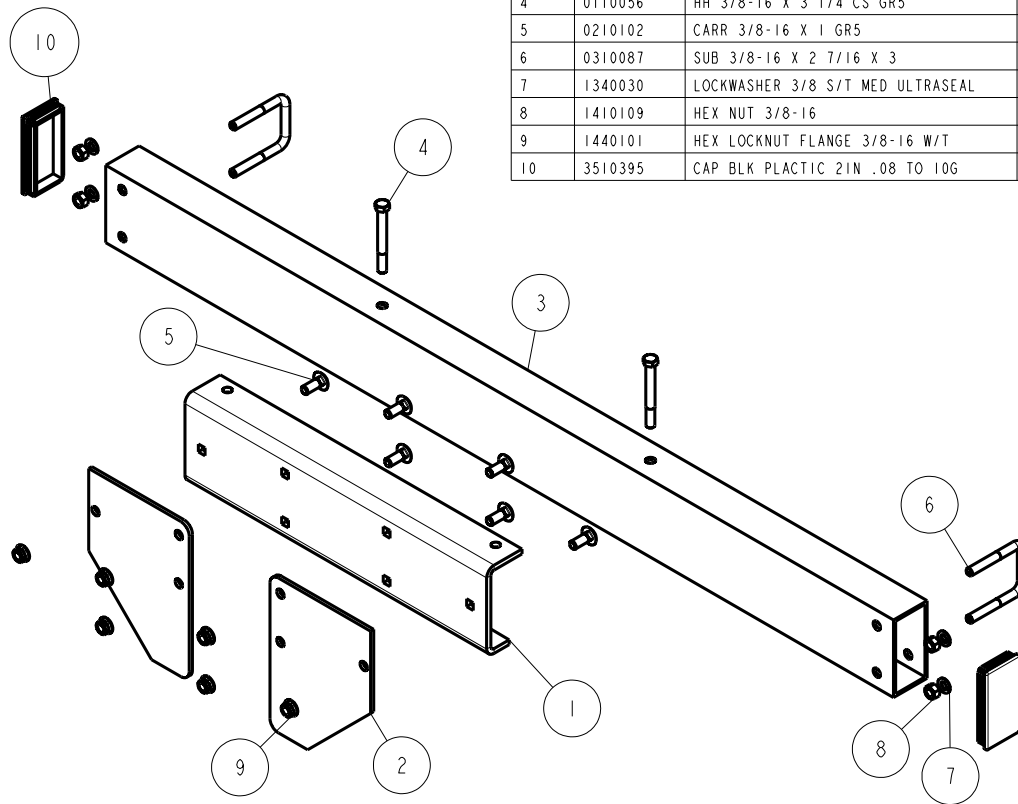
Insert the end cap into the ends of the dock mount tubes.

Mount one (1) hoist attach plate to the winch post mounting channel using three (3) 3/8" X 1" carriage bolts. Secure with 3/8" flange lock nuts. **NOTE: The hoist attach plate must be hooked over the lip on the winch post extrusion.** Place the other hoist attach plate onto the opposite side of the winch post extrusion - be sure this plate extends over the lip of the winch post extrusion before tightening.

Mount the entire hoist by sliding the winch post mounting channel over the dock mount tube and drop two 3/8" X 3-1/4" hex bolts down through holes on winch post mounting channel to secure the hoist to the dock.

Hoist Dock Mount Kit ShoreBridge

ITEM	PART #	DESCRIPTION	QTY	NOTE
1	66017	WINCHPOST MOUNTING CHANNEL	1	
2	66018	HOIST ATTACH PLATE	2	
3	71070	SHOREBRIDGE PWC DM TUBE	1	
4	0110056	HH 3/8-16 X 3 1/4 CS GR5	2	
5	0210102	CARR 3/8-16 X 1 GR5	6	
6	0310087	SUB 3/8-16 X 2 7/16 X 3	2	
7	1340030	LOCKWASHER 3/8 S/T MED ULTRASEAL	4	
8	1410109	HEX NUT 3/8-16	4	
9	1440101	HEX LOCKNUT FLANGE 3/8-16 W/T	6	
10	3510395	CAP BLK PLACTIC 2IN .08 TO 10G	2	



Slide square u-bolts from the inside out on the curved truss of the Shorebridge dock section locating them so they will insert into the holes on each end of the dock mount tube. Place a 3/8" lock washer over the threaded end of the u-bolt inside the tube and secure with a 3/8" hex nut. Repeat on the other leg of the u-bolt and on the u-bolt on the other end. Level the tube and tighten securely.

Check to make sure that all fasteners have been tightened securely and that all adjustments have been made.

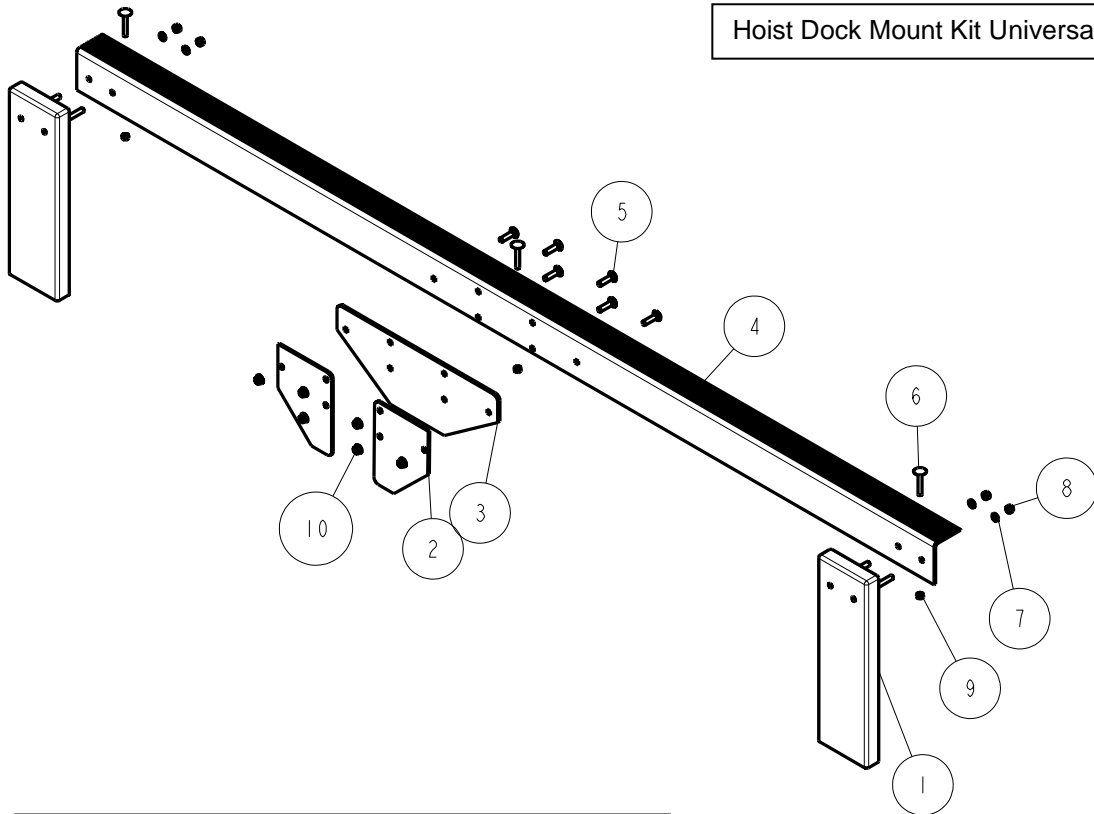
Insert the black plastic caps into the ends of the tube and assembly is complete.

Insert the 3/8 X 1" carriage bolts thru the winch post mounting channel and thru the hoist attaching plate and then thread on a 3/8" flange lock nut to hold in place.

Slide the channel assembly over the tube that is mounted on the dock and align the holes in the channel with those in the tube. Insert the 3/8 X 3 1/4" hex bolts into the holes.

Slide the lift into position and insert the flanges of the winch post extrusion behind the hoist attaching plates. Position the lift for proper water depth and tighten the flange lock nuts so that the winch post extrusion is tightened in position securely.

Hoist Dock Mount Kit Universal



ITEM	PART #	DESCRIPTION	QTY	NOTE
1	62587	PWC DOCK BUMPER	2	
2	66018	HOIST ATTACH PLATE	2	
3	66431	WINCH POST PLATE - SS853D	1	
4	66432	DOCK MOUNT ANGLE - SS853D	1	
5	0220110	CARR 3/8-16 X 1 1/2 FULL THREAD GR5	6	
6	0230070	CARR 5/16-18X2 1/4 AL FULL THD S	3	
7	1340030	LOCKWASHER 3/8 S/T MED ULTRASEAL	4	
8	1410109	HEX NUT 3/8-16	4	
9	1420069	HEX NUT 5/16-18 ALUMINUM 6061-T6	3	
10	1440101	HEX LOCKNUT FLANGE 3/8-16 W/T	6	

Place the winch post mounting plate to the dock angle using six (6) 3/8" X 1-1/2" carriage bolts.

Mount the hoist attach plate to the winch post mounting plate over the six (6) 3/8" X 1-1/2" carriage bolts as shown. Secure with 3/8" flange lock nuts.

Mount the dock bumpers and secure with 3/8" medium lock washers and 3/8" hex nuts.

Lay the dock mounting angle onto the dock.

Secure the dock mounting angle onto the dock with three (3) 5/16" X 2-1/4" carriage bolts and three (3) 5/16" hex nuts.

Positioning the PWC on the Hoist

The hoist is designed to raise and support the rated load as identified on the capacity labels on the hoist. However, for optimum performance the PWC must be properly positioned on the hoist platform when it is being raised. The hoist is designed to raise the load in the center of the load front to rear. The center of gravity of the PWC load being raised should be aligned with the vertical posts.

Determining the Center of Gravity of the Machine

Many times the center of gravity of the machine will be located approximately at the center of the motor front to rear. This will be close in determining the position of the machine on the hoist front to rear for most two and three place machines. Four place machines may have the center of gravity located further rearward to approximately the center of the machines length front to rear. These are good starting points for determining the center of gravity on the standard machines. Moving your individual machine slightly forward or backward from here will get you very close to the center of gravity. Once identified, place an identifying mark, tape or decal at that location on the top outside edge of the PWC so you have a locating point to use when positioning the PWC on the hoist after use. This is accomplished by placing the PWC on the hoist until the mark, tape or decal is located directly opposite the vertical post.

Positioning the machine as described will reduce the internal friction and drag thus allowing your unit to be raised with less strain and force.

SAFETY PRECAUTIONS

DO NOT OPERATE THIS HOIST WITHOUT FIRST STUDYING THIS OWNER'S MANUAL

1. See to it that you, your family, and anyone else who uses the hoist looks upon the unit not as a toy, but a piece of heavy equipment that deserves your respect and good judgment.
2. Before allowing anyone to operate the unit, be sure they fully understand the proper operating procedure.
3. Do not exceed maximum capacity unit, overloading may cause mechanical failure and serious personal injury.
4. All persons should stand clear and should not be allowed to board your watercraft when it is being raised or lowered.
5. If you choose to remove the winch cover and inspect or work on the winch, be sure the platform is completely lowered.
6. It is a good safety policy to restrict children, as well as adults, from playing on or near the hoist.
7. Service winch annually. **IMPORTANT:** Winch maintenance schedule must be followed to avoid possible failure and injury. See winch owner's manual for instructions.
8. Check cable for wear or fraying and also stress on cable attaching ends. If this occurs, replace cable immediately.
9. Be sure the hoist is installed level, severe out of level installation may cause hoist hand up and serious personal injury.
10. Do not work on you watercraft or hoist with watercraft on the hoist.
11. Check all sheaves, make sure they are turning and operating properly.
12. Check fasteners on cable ends to be positive they are threaded properly (see setting up instructions).
13. If the winch handle begins to freely spin down for any reason, at no time should you attempt to prevent it from doing so. Such action could result in injury to arms and hands. Instead, simply let the platform spin down into the water. Doing so will neither damage your watercraft or hoist.
14. Never pick up on platform of hoist while trying to move, position, or transport hoist. Doing so may cause serious personal injury.
15. Never stand or walk on hoist platform while in any raised position. Doing so may cause serious personal injury.