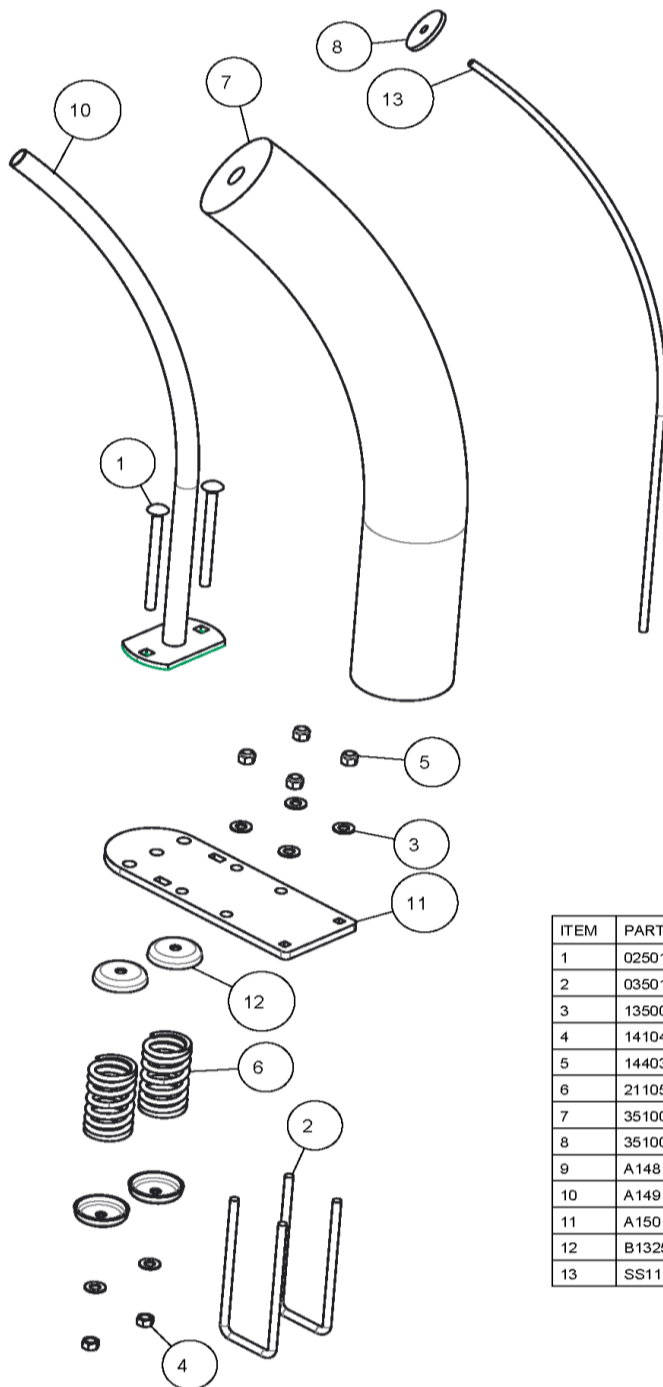


### SSNAV Aluminum Centering Device



ITEM	PART #	DESCRIPTION	QTY	NOTE
1	0250131	CARR 3/8-16 X 5 SS GR5	8	
2	0350110	SUB 3/8 X 2 5/8 X 6 5/8 SS	8	
3	1350095	WASHER USS FLAT 3/8 STAINLESS	24	
4	1410403	HEX NUT 3/8-16 BRASS	8	
5	1440366	HEX LOCKNUT 3/8 BRASS/NYLON INSERT	16	
6	2110501	SPRING COMP ENDS CLOSED GROUND	8	
7	3510005	POLYETHELENE LOG 4 IN X 27 IN WH	4	
8	3510012	POLY WASHER - 2INOD X 3/8INID X 3/16	4	
9	A148	SSNA STEM RIGHT	2	
10	A149	SSNA STEM LEFT	2	
11	A150	SSNA MTG BAR 5/16 X 4 ALUM	4	
12	B1325	WASHER GALV CUP SMALL HOLE	16	
13	SS1121	ROPE 5/16 X 4 FT. SSNA NYLON	4	

#### SSNAV Assembly Instructions

Fasten one (1) SSNAV mounting clamp in position as shown in the drawing with two (2) 3/8" U-bolts from the bottom up through the 4" aluminum mounting bar. Secure with 3/8" flat washers and 3/8" flange lock nuts. Position the unit on the platform and tighten all fasteners.

**IMPORTANT:** Place the centering device so that the top of the stern points out the open end of the hoist and will stay clear of the guide post brace and winch tubes when raising and lowering the platform.