

**AN ASSEMBLY VIDEO FOR THIS HOIST
IS AVAILABLE ONLINE AT:
WWW.YOUTUBE.COM/CRAFTLANDER**

Note bolt thread area should be on outside of hoist

If this print has colored cables they are for easier understanding of how they are strung.
Cables from the factory are colored too. They won't all match to below colors.

**Exploded View of Upper
Cable Sheave/Cable Cover
Pre-Assembled**

All cables should not be
real tight. Should be a little
loose.

**Note: Holes drilled in the lower spreaders are
needed for the stabilizer tubes on the 8,000 lb
hoist. Stabilizer tubes are not required on the
6,000 lb hoist.**

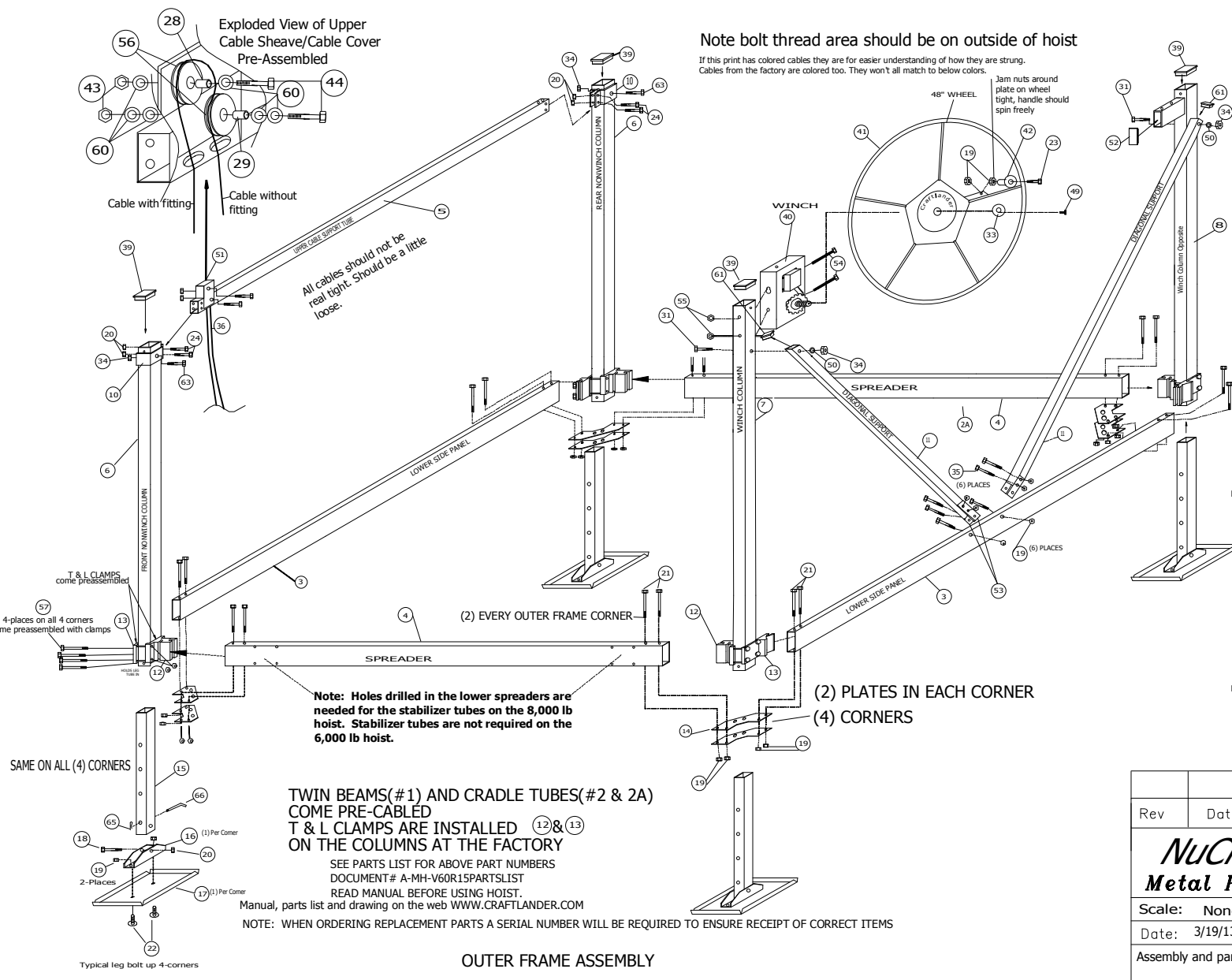
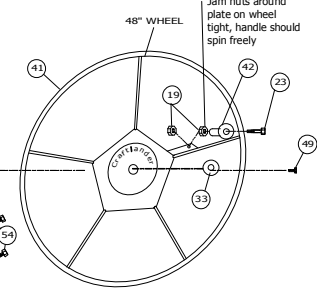
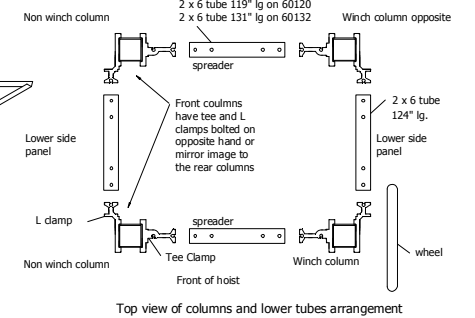
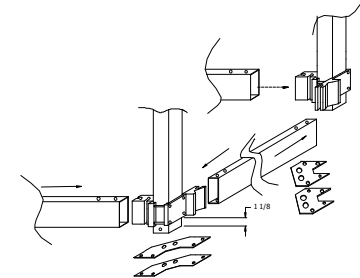
**TWIN BEAMS(# 1) AND CRADLE TUBES(#2 & 2A)
COME PRE-CABLED
T & L CLAMPS ARE INSTALLED (12)&(13)
ON THE COLUMNS AT THE FACTORY**

SEE PARTS LIST FOR ABOVE PART NUMBERS
DOCUMENT# A-MH-V60R1SPARTSLIST
READ MANUAL BEFORE USING HOIST.

Manual, parts list and drawing on the web WWW.CRAFTLANDER.COM

NOTE: WHEN ORDERING REPLACEMENT PARTS A SERIAL NUMBER WILL BE REQUIRED TO ENSURE RECEIPT OF CORRECT ITEMS

OUTER FRAME ASSEMBLY



Rev	Date	Description	Int
		NuCraft [®] Metal Products	CRAFTLANDER [®]
		402 Southline Rd. Roscommon, MI 48653	
Scale: None		Approved by:	Drawn by: FS
Date: 3/19/13			
Assembly and part locations for MH-V60120 & MH-V60132			Drawing Number A-MH-V60R-15-1