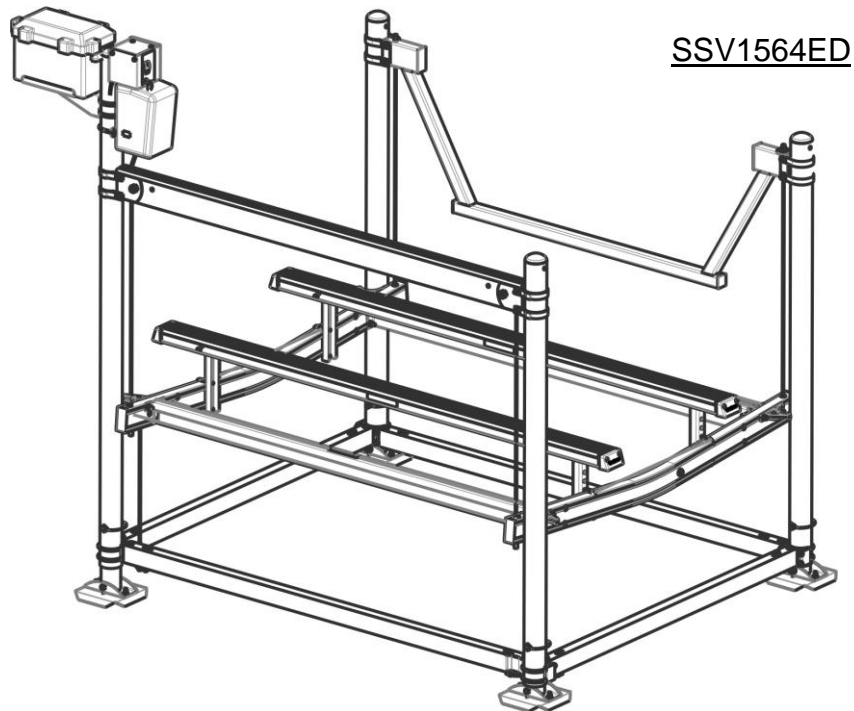
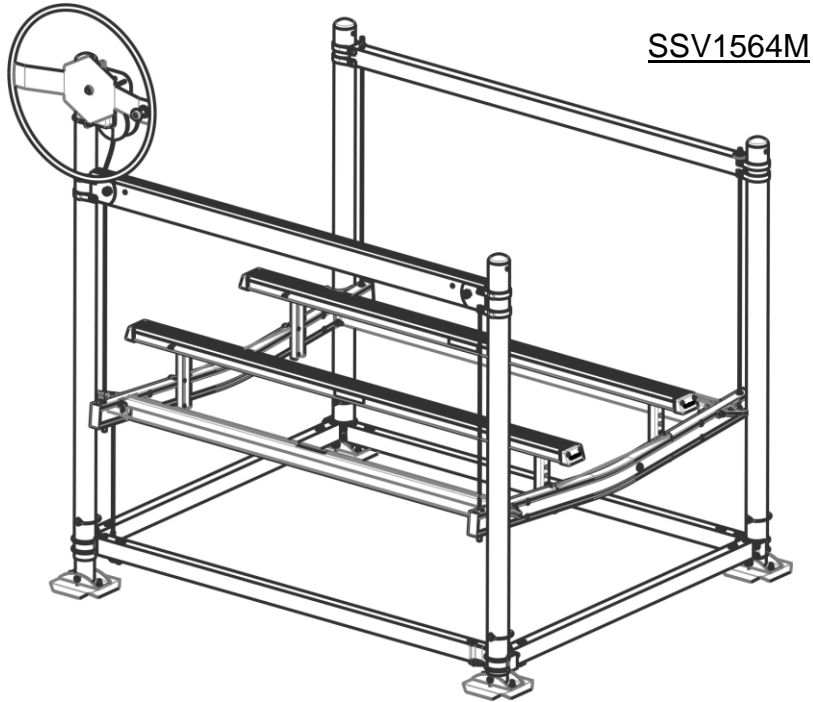


**SSV1564M & SSV1564ED
PWC LIFT ASSEMBLY GUIDE
MANUAL & FLEXPPOWER® ELECTRIC**

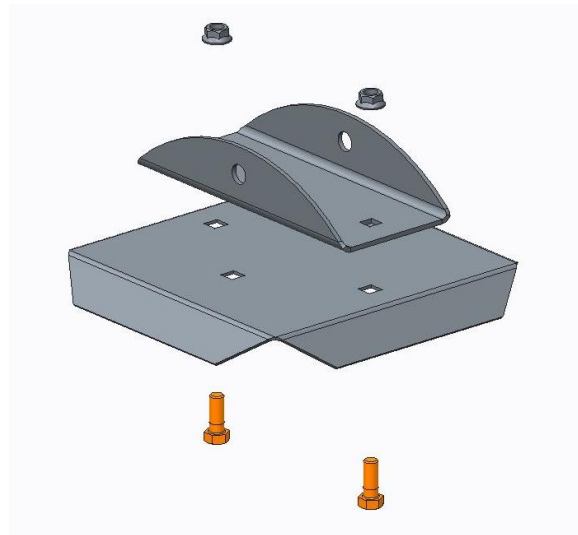


Step #1 – Sort Hardware

Open the hardware box and bag and sort the hardware and other contents by size. Locate the fastener finder sheet in the hardware box to help identify the fasteners used in the assembly of these lifts.

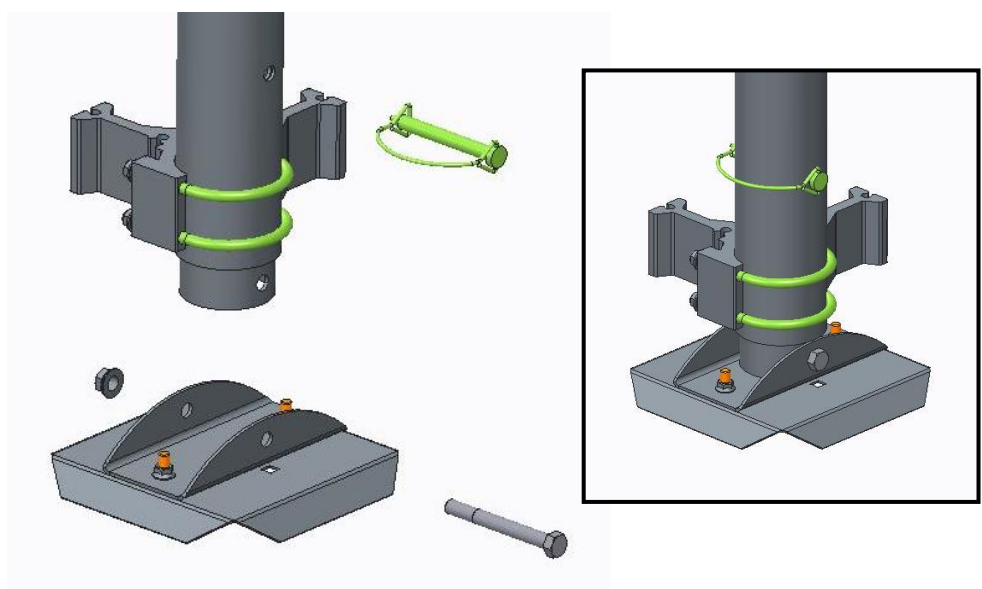
Step #2 – Assemble Base Pads

Collect enough of the fasteners and items shown below to assemble four base pads. Align the channel clamp with the holes in the base pad as shown, insert 3/8-16 x 3/4 bolts from the bottom up and secure with 3/8 flange lock nuts. Tighten and repeat for all four base pads.



Step #3 – Assemble Base Pads to Legs

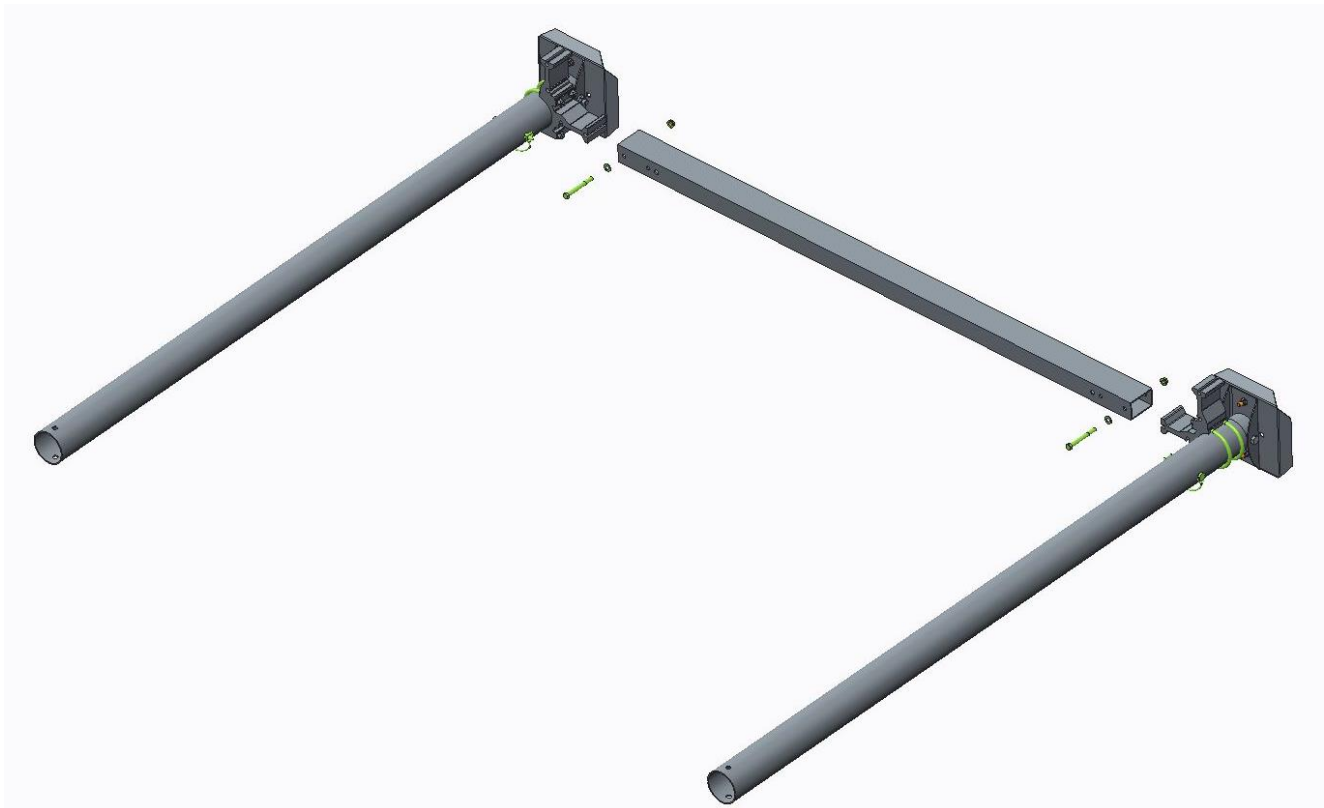
Locate the leg bundle and cut the bands to open it up. Put a 1/2-13 x 4-1/2 bolt thru the channel clamp and the adjustable leg tube as shown and secure with a 1/2 flange locknut. The pin will be in the leg when the corner block is installed.



Note that the 1/2-13 x 4-1/2 bolts should be inserted in the same direction as that of the U-bolt. Secured so that two threads show out the end of the locknut. Repeat this process on the remaining legs.

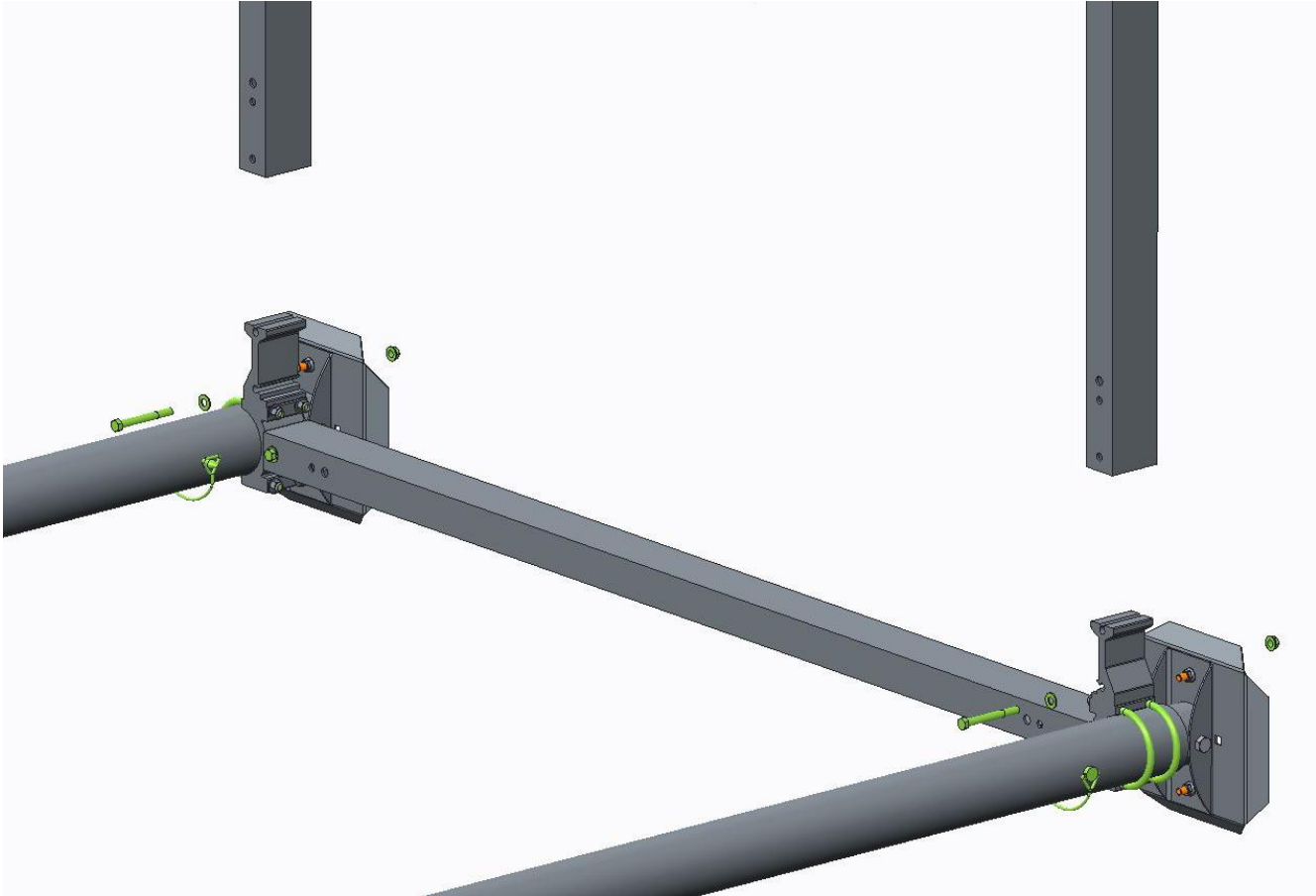
Step #4 – Assembly of Front and Rear Frame

Use the components included in the lower frame bundle. Your assembly will start by laying two legs down with the corner blocks as shown. Slide a crossmember tube (63-3/4") over the corner block and insert the *short bolt* (3/8-16 x 3-1/2) with a 3/8" flat washer into the hole closest to the post assembly. Secure with 3/8 flange locknut. The winch post leg, longest tube, will be assembled as the left front or the right rear leg to match the lift tube assembly. Repeat with other two legs and other crossmember. **DO NOT TIGHTEN.**



Step #5 – Attach the Side Frame Tubes

Locate the side frame tubes (81-1/4") and with the rear legs still laying on their side, slide the side frame tubes over the corner blocks. Insert the short bolt with a washer into the hole closest to the post and secure on the bottom with a 3/8 flange locknut. **DO NOT TIGHTEN.**



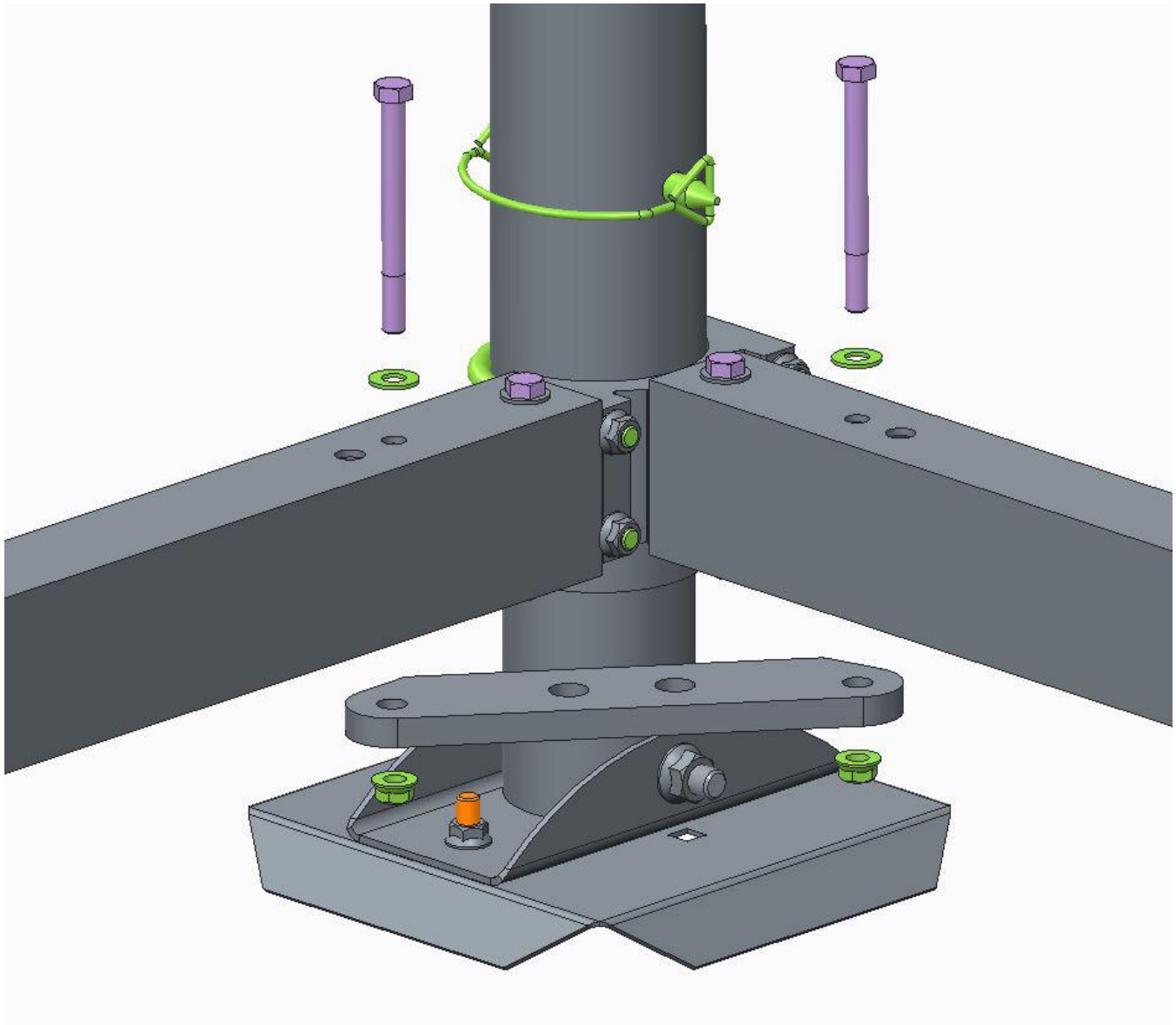
Step #6 – Attach the Front Legs Assembly

Flip the entire assembly upright onto the base pads, and slide the side frame tubes over the front corner leg blocks. Insert the short bolts with washers into the holes and secure on the bottom with 3/8 flange locknuts as shown below. **DO NOT TIGHTEN.**



Step #7 – Complete Bottom Frame & Post Assembly

Locate the long bolts (3/8-16 x 4) and the bottom corner cable bracket. Only on the winch tube side, insert the long bolt with a flat washer thru the second hole from the post, thru the frame tubes, and then thru the corner cable bracket on the bottom as shown. Use short bolts on the other side of the frame in the holes second from the post. Secure with a 3/8 flange locknut. Square the frame by measuring diagonally corner to corner and tighten all hardware installed.

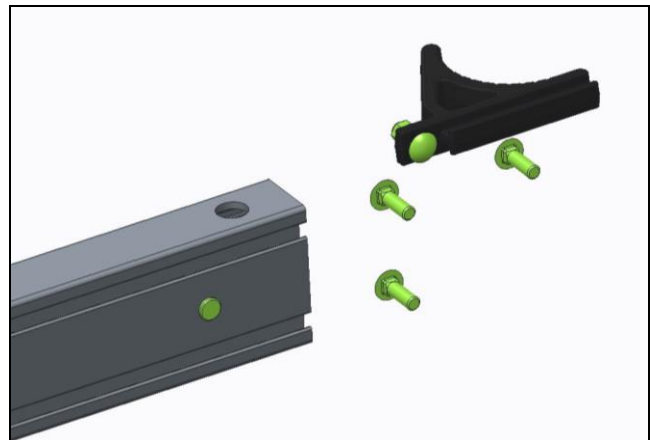
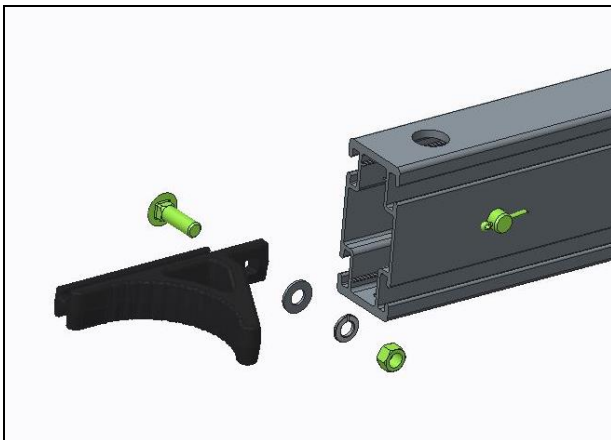


Step #8 – Assemble the Lift Platform

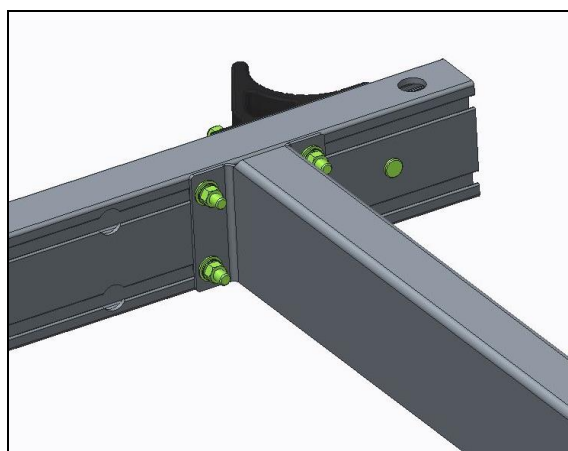
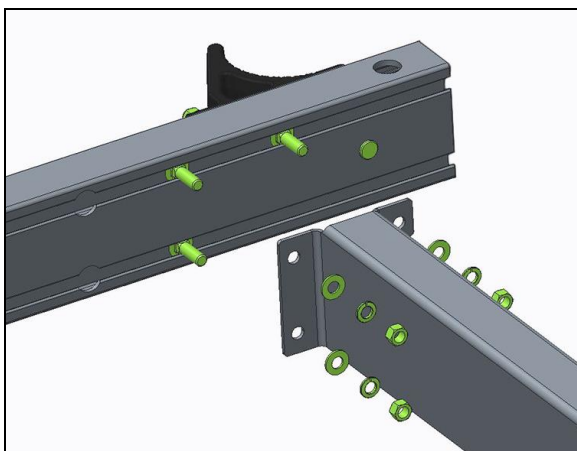
Lay the V-Shaped cradle tubes across the lower frame as shown. Place the end with the lift cable threaded out the bottom on the same side as the corner cable brackets.



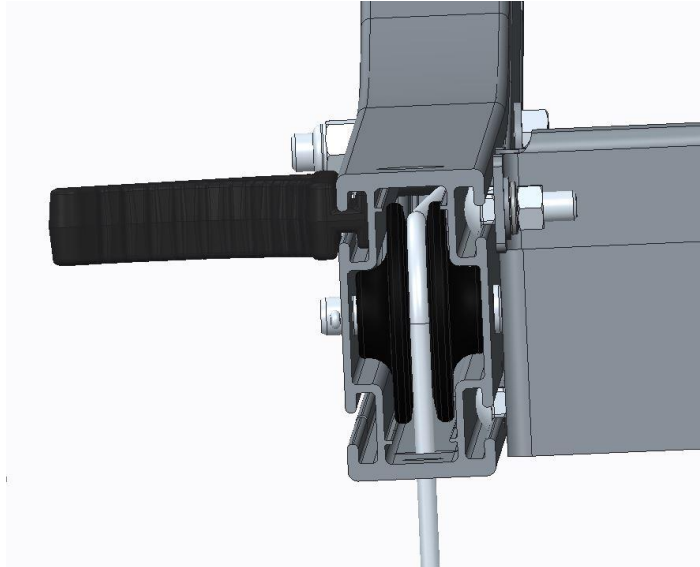
Attach a 3/8 carriage bolt to a plastic corner guide with a flat washer, lock washer, and locknut as shown below on the left. Slide the corner guide with hardware into the top slot on the outside of the cradle tube, and slide 2 carriage bolts into the top slot and 1 into the bottom slot on the inside of the cradle tube as shown below on the right.



Using those bolts, mount a side rail on each end of the cradle tube as shown. Position the outer edge of the rails at least 3 inches from the end of the cradle tube. It is important to keep this distance equal on all four corners to keep it square. Do the same on the other three corners. **DO NOT TIGHTEN.**

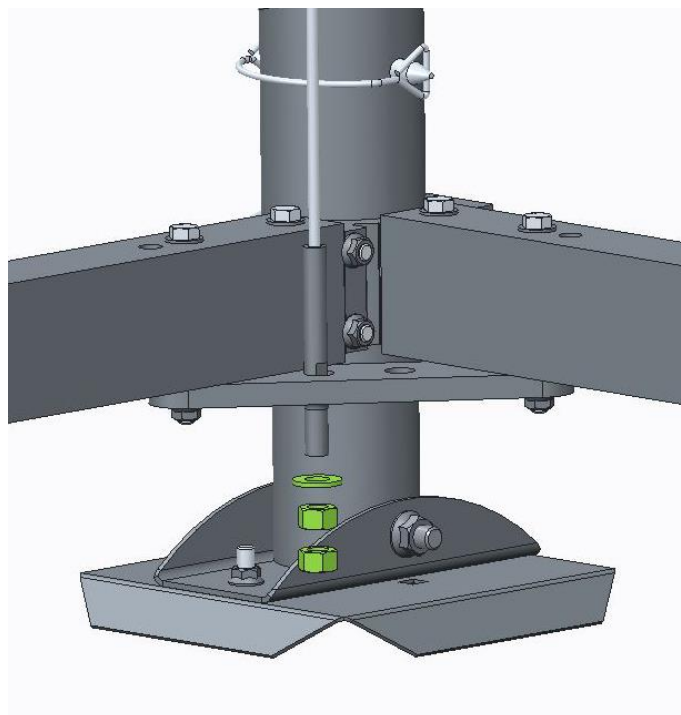


The following picture shows the position of the level cable as it comes over the pulley in the cradle tube and out the bottom to go to the corner cable bracket attached to the corner of the lower frame. Note the other hole on the end of the cradle tube will be used later to attach the cables coming from the bottom of the lift tube.



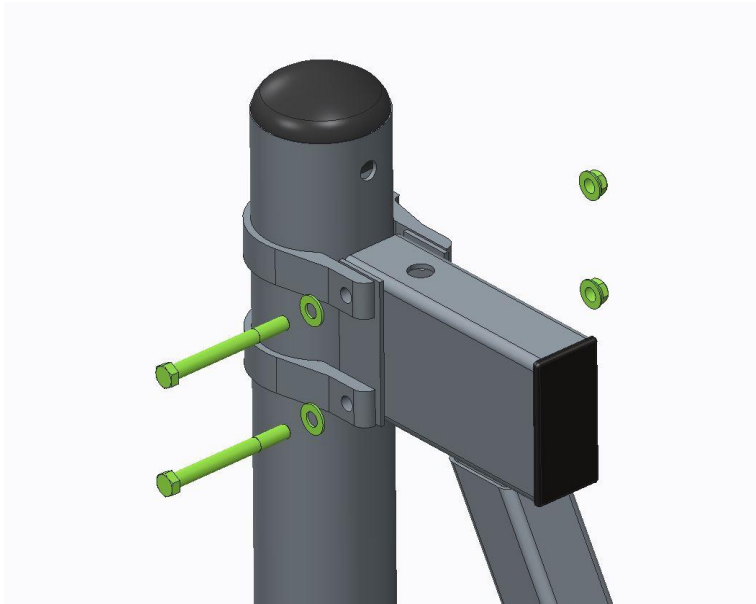
Step #9 – Attach the Level Cable

Attach the level cable as shown inserting the cable into the hole closest to the sideframe and securing with a flat washer and 2 brass hex nuts. The first nut will be run to the bottom of the threads and the second run down and secured tightly against the first. Repeat on other level cable.



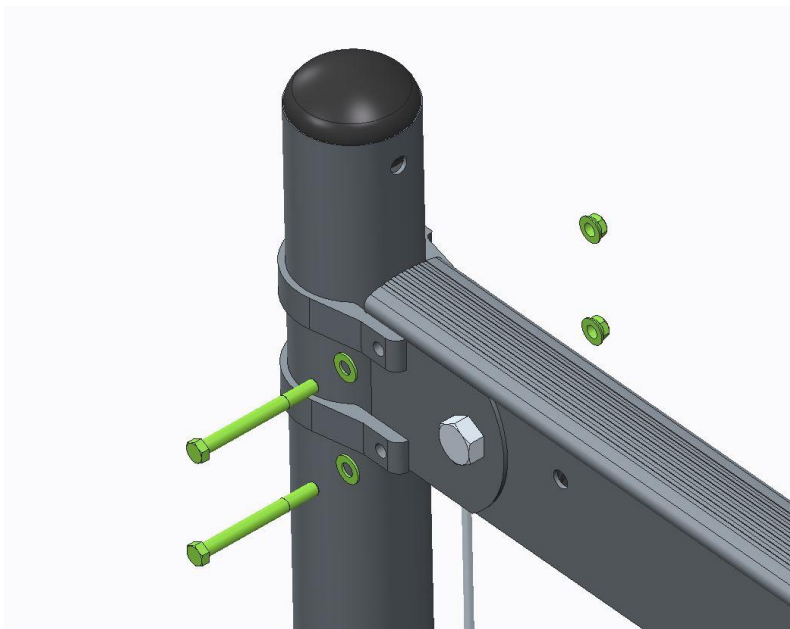
Step #10 – Install the Side Brace Tube / Drop Side

The side brace tube is located opposite the lift tube so install it on the posts opposite of the corner cable brackets. The ED (electric drive) model has a drop side tube (shown below), and the M (manual) model has a straight side brace tube. Use the appropriate brackets, bolts (3/8-16 x 3-3/4), and washers to mount the side brace tube to the post as shown, keeping the lock nuts on the outside. Adjust the brackets on both sides so there is about 2-1/2" between the top of the leg and the top of the bracket, and tighten all fasteners securely.



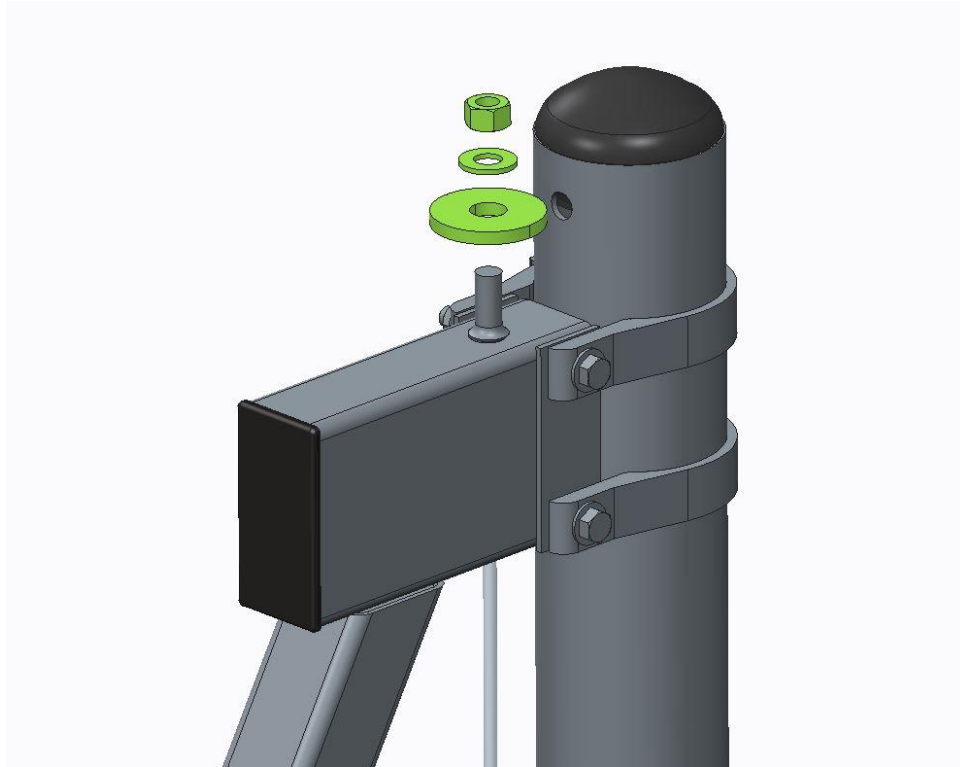
Step # 11 – Attach the Lift (Winch) Tube Assembly

Mount the lift tube to the post as shown, keeping the lock nuts on the outside. Adjust brackets on both sides so there is about 2-1/2" between the top of the leg and the top of the bracket on the short leg, about 17-1/2" difference on the longer leg, and adjust it accordingly to get tension in the level cables. Tighten all fasteners securely.



Step # 12 – Attach Level Cables to Spacer Brace Tube

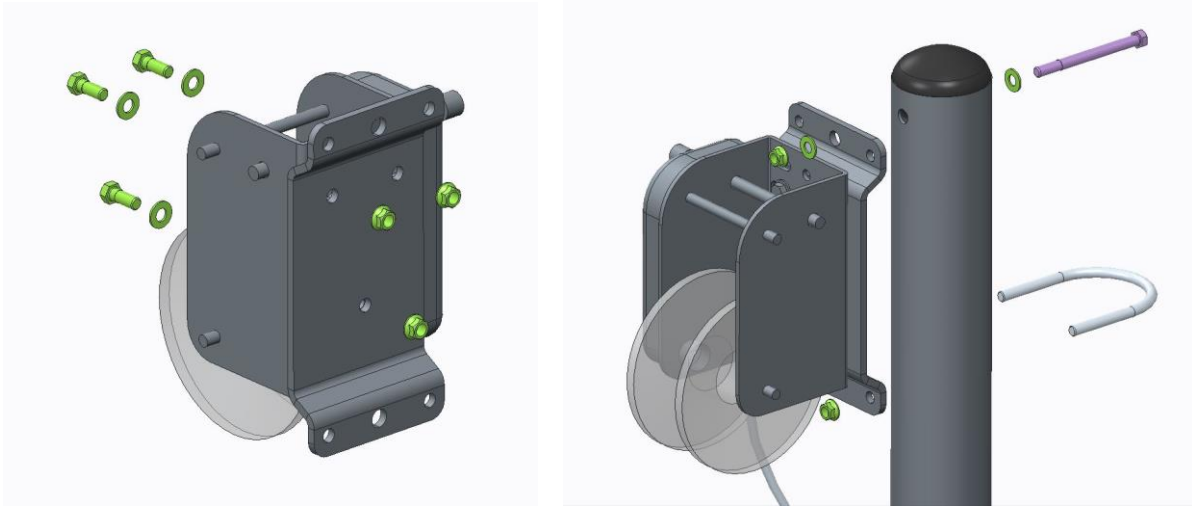
Insert the ends of the level cables (from the cradle tubes) directly up thru the side brace tube and secure with an aluminum washer, 1/2 flat washer, and 1/2-13 brass nut. Hint: Block the platform off the lower frame about 6 inches to create enough slack for the cable to pass thru the brace tube.



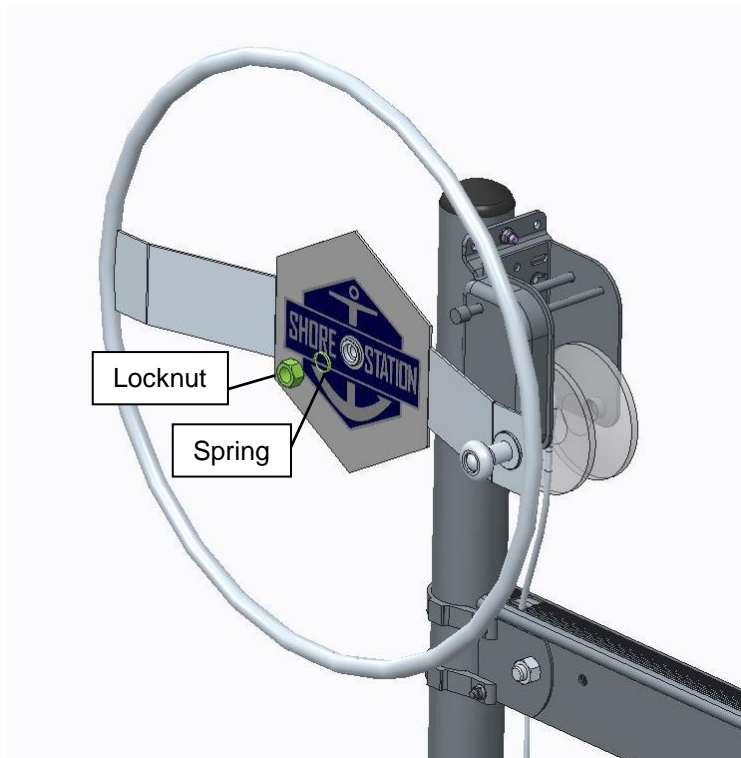
Step # 13 – Mounting Manual and Electric Winches.

Manual Winch

First, bolt the winch and the winch bracket together with 3/8-16 x 1 bolts, 3/8 flat washers, and 3/8 flange locknuts. Then use one U-bolt and one 1/2-13 x 4-1/2 bolt to attach the unit to the corner post as shown below.

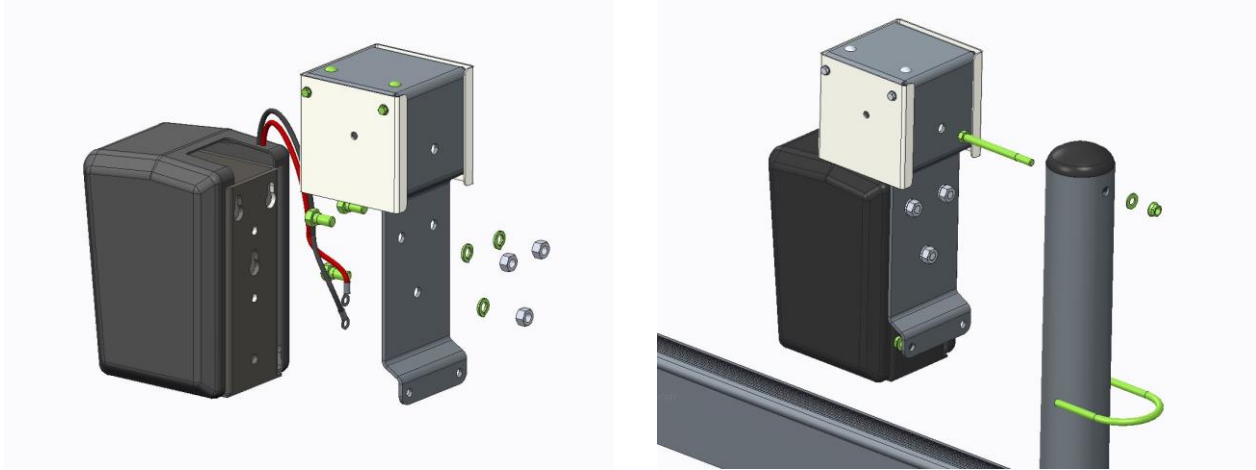


Next, slide on the wheel and spring and tighten the locknut.

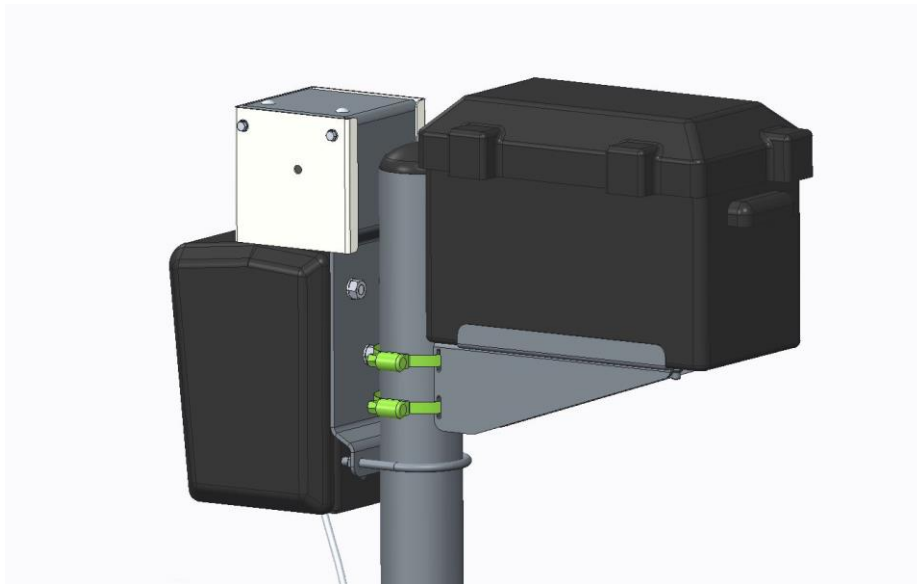


Electric Winch

First, bolt the winch and the winch bracket together with 1/2-13 x 1 bolts, 1/2" flat washers, and 1/2" flange locknuts. Then use one U-bolt and one 1/2-16 x 4-1/2 bolt to attach the unit to the corner post as shown below.

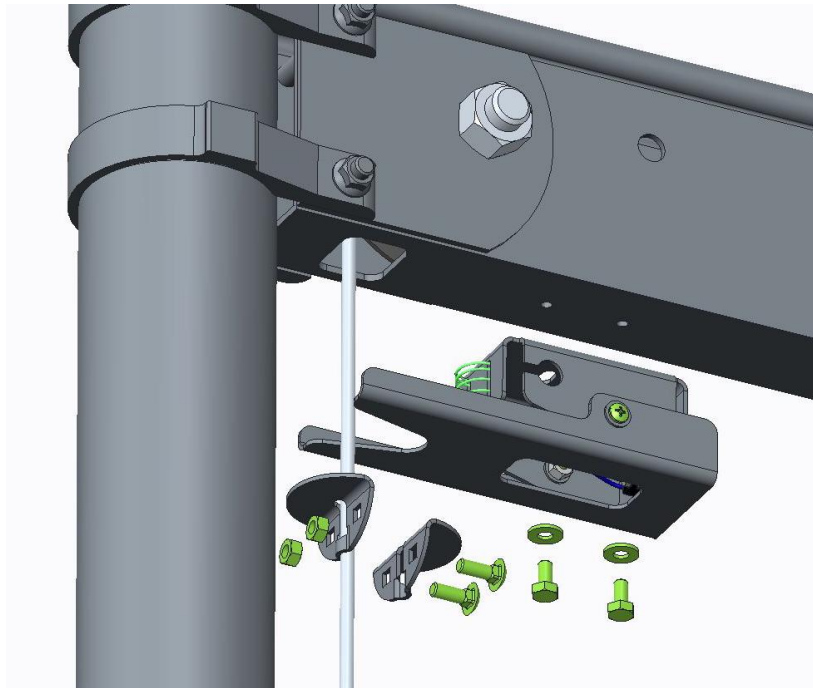


Next, clamp the battery to the corner post as shown.



Step #14 – Attaching Upper Limit Switch

Attach the upper limit switch to the bottom of the winch tube assembly as shown. The holes will allow the switch to be adjusted so the cable will travel thru the center of the slot in the pivot arm. The aluminum stop with mounting hardware are to be mounted to the cable, the final placement will not be made until the lift is in the water and the watercraft can be loaded into the lift.



Step #15 – Inserting Caps

If you haven't already, put the end caps on the platform. If you are adding a canopy you can omit the corner post caps in the assembly process. The last step would be to go around and put the black plastic caps in the top of the leg post. Before calling your assembly complete take one last walk around your hoist and make sure all nuts and bolts have been tightened, all cables are secured, and electrical connections are together.

