

Horizontal Load Guides for ShoreStation Boat Lifts

HA0185 - GlideRail adjustable centering guide - fits 1,500-4,000MS/EDS lifts

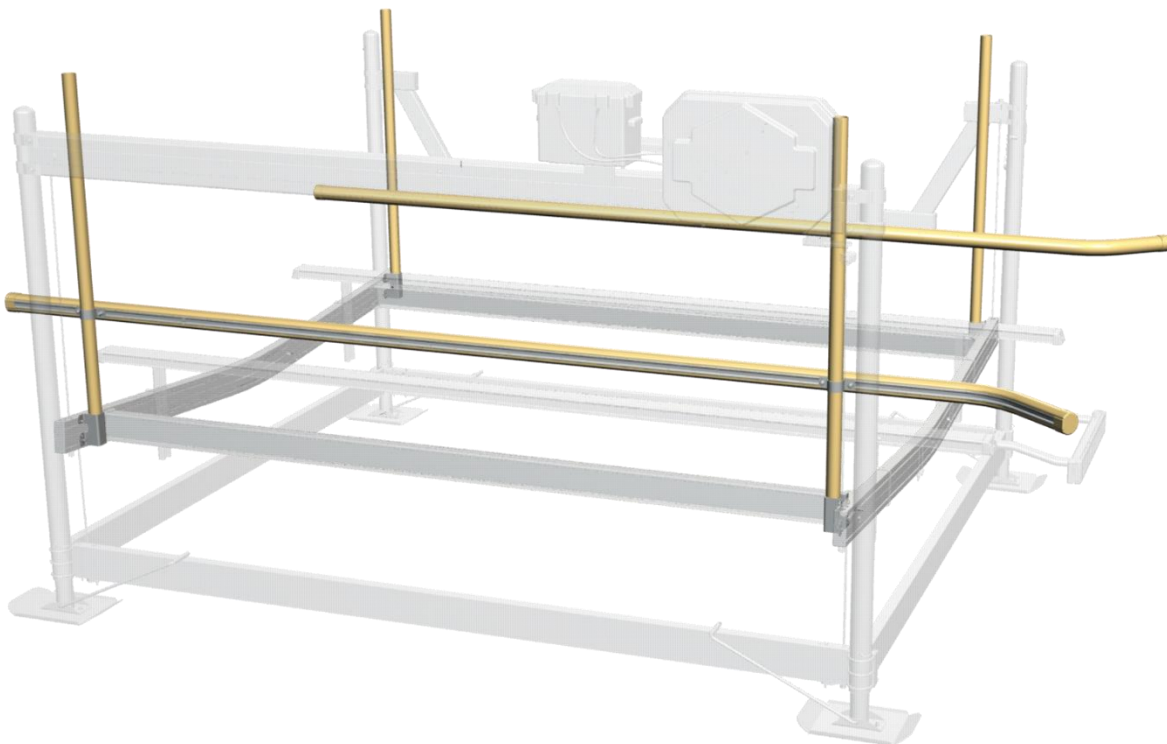
HA0186 - GlideRail adjustable centering guide - fits 4,000HS-7,000 lifts

HA0187 - GlideRail adjustable centering guide - fits 8,000-15,000 lifts

HA0189 - (optional) Aluminum Boarding Step attaches to GlideRail centering guides

Introduction

The ShoreStation® GlideRail Centering guide is designed to guide your boat into the lift while protecting the boat from the lift structure. The GlideRail provides protection along the entire length of the lift and features a flared entrance end.





Safety Instructions

DO NOT INSTALL OR USE THIS PRODUCT WITHOUT FIRST STUDYING MANUAL AND UNDERSTANDING THE INFORMATION CONTAINED IN IT.

- Never modify the GlideRail components without consent from the manufacturer (ShoreStation).
- The GlideRail system should only be used on ShoreStation® Boat Lifts.
- Never stand or step on the GlideRail system.
- The GlideRail system is design to assist the boat driver by helping center the boat in the lift. The system does NOT replace need for careful loading and will not protect the boat in all situations (heavy waves, poor alignment, excessive speed, etc.)
- Never use the GlideRail system with boats that have large or raised graphics that will contact the system. If your boat has graphics or decals, make sure the horizontal rail is adjusted so it will not contact them. ShoreStation is not responsible for damage to graphics or decals that contact the GlideRail system.

Assembly Instructions

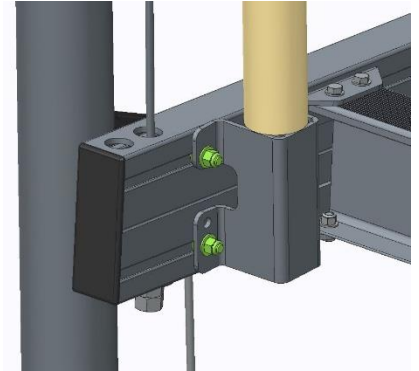
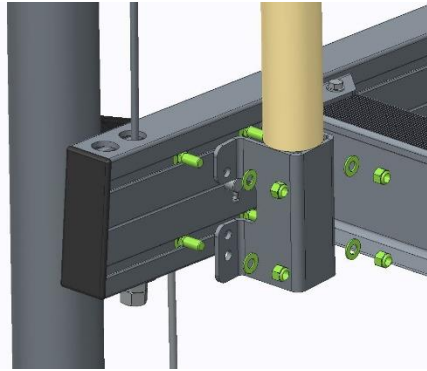
Adding Load Guides to Boat Lift

Tools Required

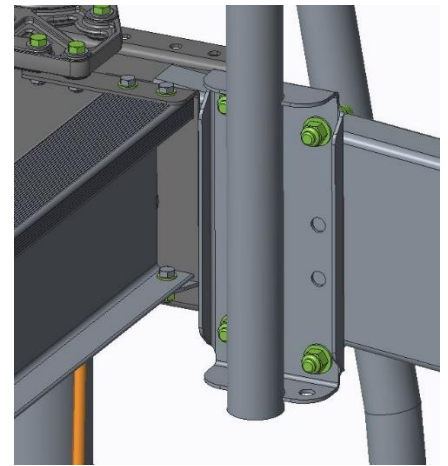
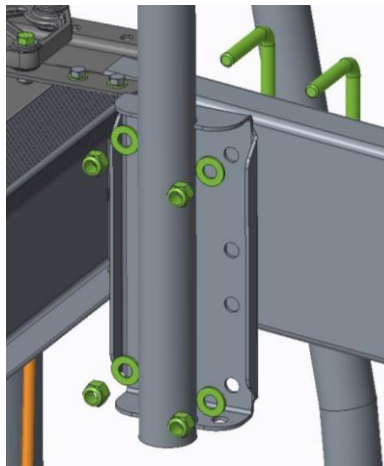
9/16" Wrench and Socket
3/4" Wrench and Socket
3/8" Hex Drive

Tape Measure
Cordless Drill

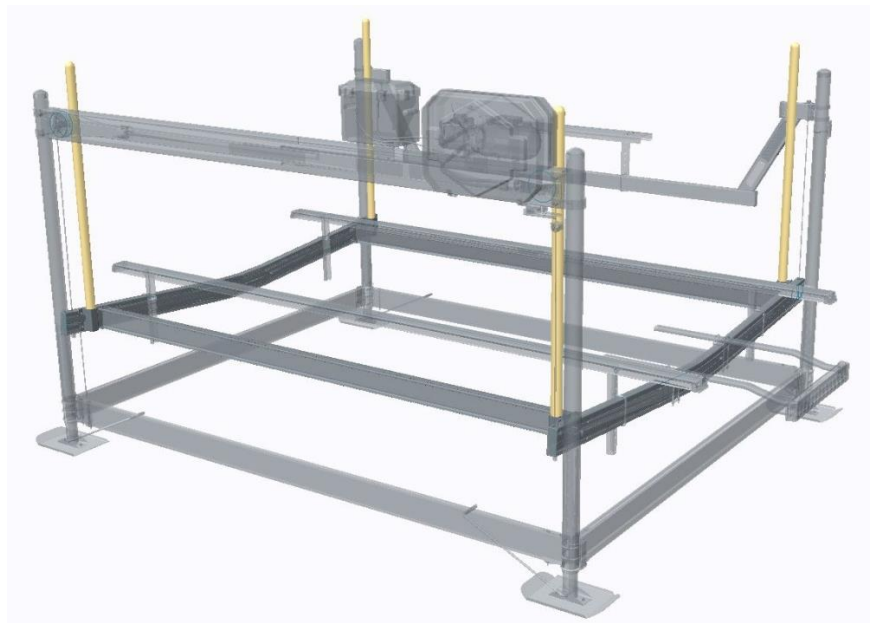
For HA0185 and HA0186, use the T-slots and correct hardware to bolt on one vertical load guide in each corner of the platform.



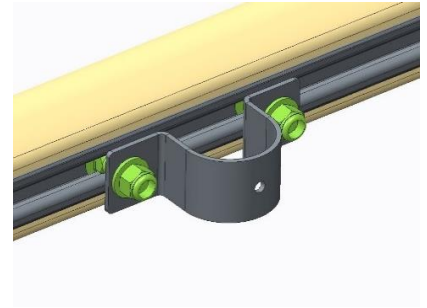
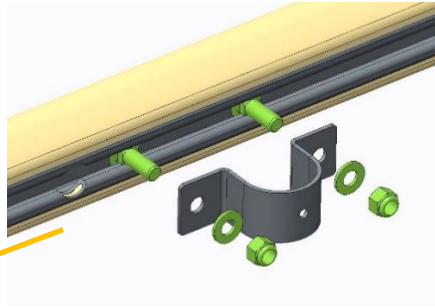
For HA0187, attach one HA0106 to the front of the platform and one HA0106 to the back of the platform as shown.



Looks like this with the vertical load guides attached.

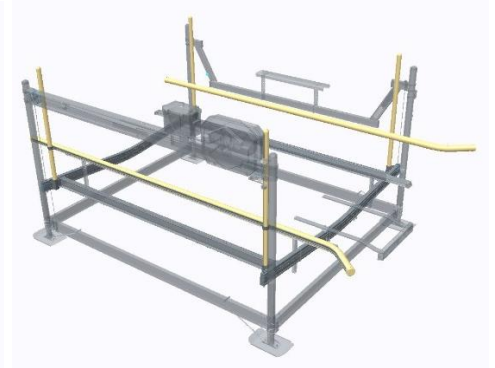
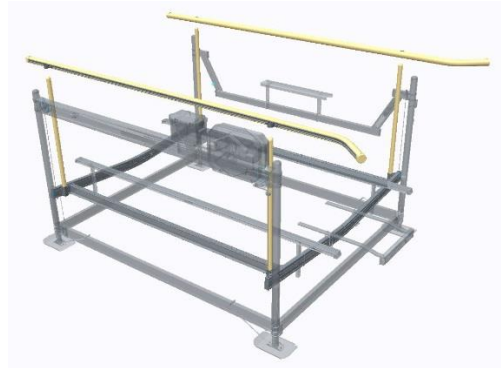


Slide the bolts in the T-slot through the access hole of the horizontal load guides and attach the clamps, but leave them loose. DO NOT tighten yet.

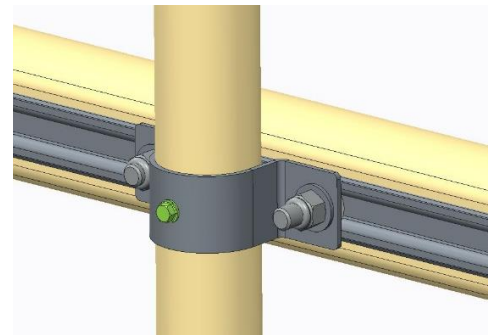
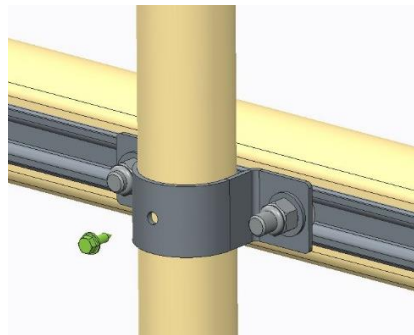


Access hole

Slide the clamps over the vertical load guides. Adjust the horizontal load guides to your desired height and tighten the bolts.



After all the clamps are tightened, drill the self-tapping screws into the vertical load guides as shown.



Adding Boarding Step to Load Guides (optional)

Slide the bolts in the T-slot through the access hole of the horizontal load guide and assemble the step parts together as shown. Then tighten the bolts.

