

# Bow Stop Aluminum Cradle HA0278



## **Application**

HA0278 fits 8,000-10,000 lb. boat lifts with an aluminum platform. The bow stop is meant to stop the boat while entering the boat lift and prevent hitting the prop against the platform.

## **Tools**

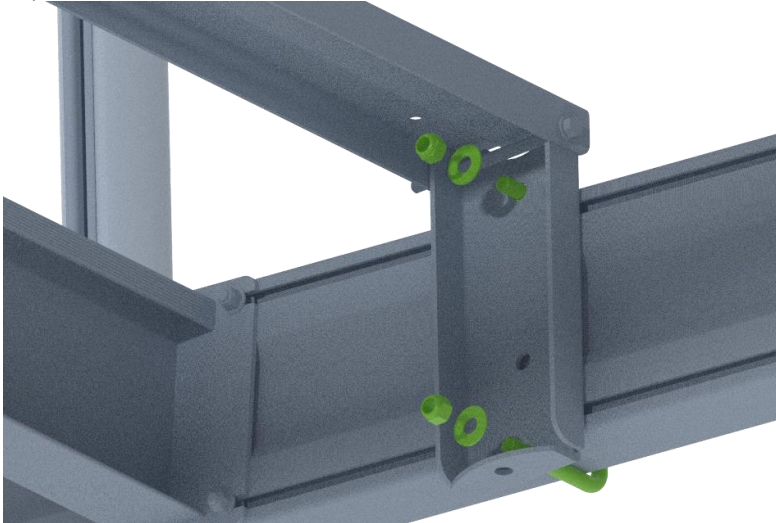
3/4 socket and wrench, 11/16 socket and/or wrench, 5/8 socket and/or wrench, 9/16 socket and wrench, 7/16 socket, cordless drill

## **Organize Parts**

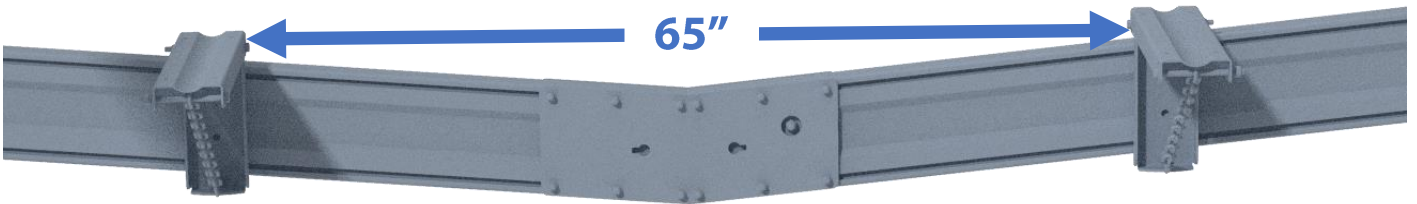
Open the hardware box and bag, and sort the hardware and other contents by size.

## **1 – Bracket Placement**

On the V-cradle where the front of the boat will be, put a square U-bolt around the aluminum cradle about 34-35" from the center of the V-cradle. Insert the U-bolt through the bow stop bracket and add washers and locknuts as shown below. Repeat on the other side of the V-cradle.

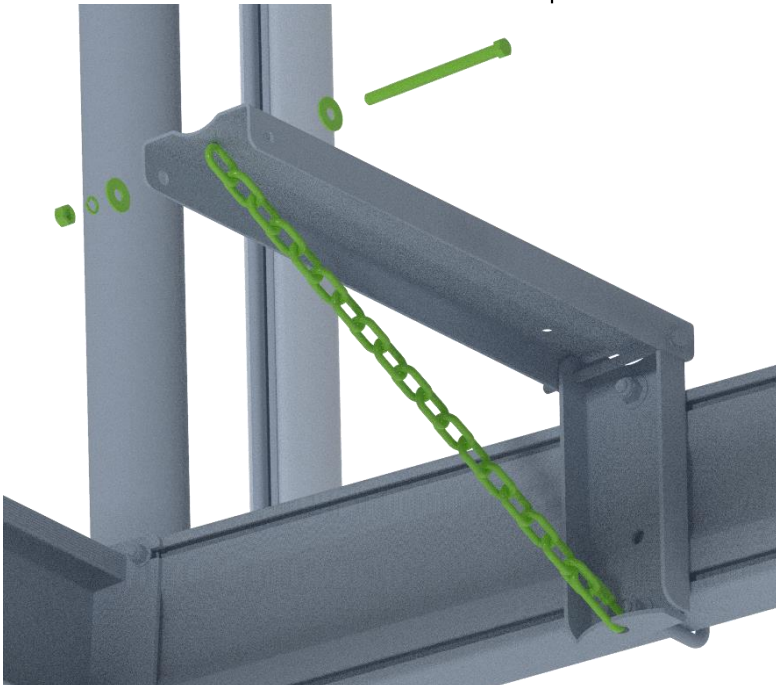


Double check- from inside of the bracket to inside of the bracket on the other side should be about 65"



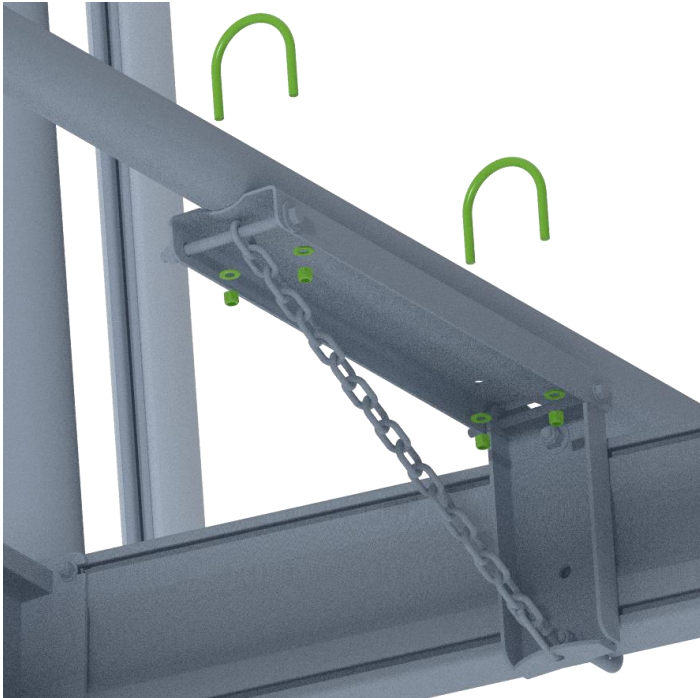
## **2 – Connect the Chain**

Insert the 6" hex head bolt through a washer, the bracket, the chain, the other side of the bracket, a washer, lock washer, and add a hex nut as shown below. Connect the quick link to the bottom of the vertical bracket and to the chain.



### **3 – Bow Stop Arms**

Insert the round U-bolts into the bow stop bracket. Add fitting washers underneath the bracket and start the locknuts, but do not tighten. Put the bow stop arm through the round U-bolts so the curved part is outside the boat lift. Repeat on other side.



### **4 – Connect Bow Bumper**

Rotate the bow stop arms and fit the bow bumper onto the arms. Secure it into place with self-drilling screws. Now the boat needs to be loaded on the platform and adjust the bow stop arms (and possibly the quick link) to properly fit the boat. The bow bumper should be just above the boat's bow eye. Make sure all mounting components are in place and centered, then tighten all the hardware.

