

Centering Guides 8-10K Aluminum Cradle HA0281



Application

HA0281 fits 8,000-10,000 lb. boat lifts with an aluminum platform. The centering guides are meant to guide and center the boat while entering the boat lift. **Installing these loadguides will reduce the maximum boat width by 5 inches.**

Tools


3/4 socket and wrench, 9/16 socket and wrench, cordless drill



WARNING

DO NOT ATTEMPT TO ASSEMBLE THIS PRODUCT WITHOUT FIRST STUDYING THIS MANUAL AND INFORMATION ON LABELS INCLUDED WITH THE SYSTEM. FAILURE TO DO SO CAN LEAD TO IMPROPER OPERATION RESULTING IN SERIOUS PERSONAL INJURY AND/OR PRODUCT DAMAGE. IF YOU HAVE FURTHER QUESTIONS AFTER REVIEWING THIS INFORMATION, CONTACT A SHORESTATION REPRESENTATIVE AT (800) 859-3028.

Safety Definitions

Safety messages are presented throughout this document and labels affixed to the product. The messages alert you to potential hazards to you and/or property. The signal words **DANGER**, **WARNING**, and **CAUTION** are preceded by an alert symbol  and communicate the severity of potential hazard. The severity of each type of message is defined as follows:

- **DANGER** indicates a hazardous situation which, if not avoided, will result in death or serious injury.
- **WARNING** indicates a hazardous situation which, if not avoided, could result in death or serious injury.
- **CAUTION**, used with the safety alert symbol, indicates a hazardous situation which, if not avoided, could result in minor or moderate injury.

Safety Instructions

WARNING

- Remove any metallic objects from your person before working with DC or AC electrical components.
- Disconnect power from the lift and turn the key switch (if available) to the OFF position before working on the lift.
- Assembly and installation of this system may require working over water. Always wear a personal floatation device (PFD) when working over the water
- Always wear proper personal protective equipment such as safety glasses, gloves, hardhats, and clothing.
- Never work alone and observe safe lifting practices such as team lifting and proper lifting posture.
- Do NOT modify the equipment unless you have received direct written approval from the manufacturer (ShoreStation®).

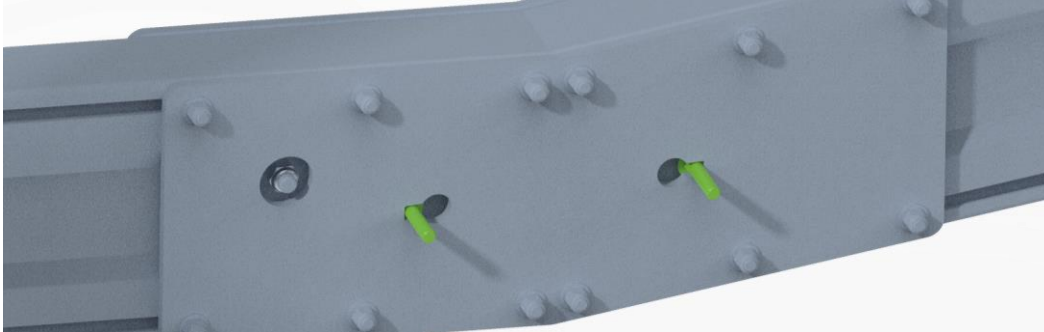
Organize Parts

Open the hardware box and bag, and sort the hardware and other contents by size.

1 – Pulley Weldment

This accessory is mounted on the entry end of the boat lift. 'Left' and 'right' references are as if looking into the boat lift from the entry end.

On the inside of the boat lift (on the entry end), insert the carriage bolts through the splice plate and slide them sideways into the square slot area.

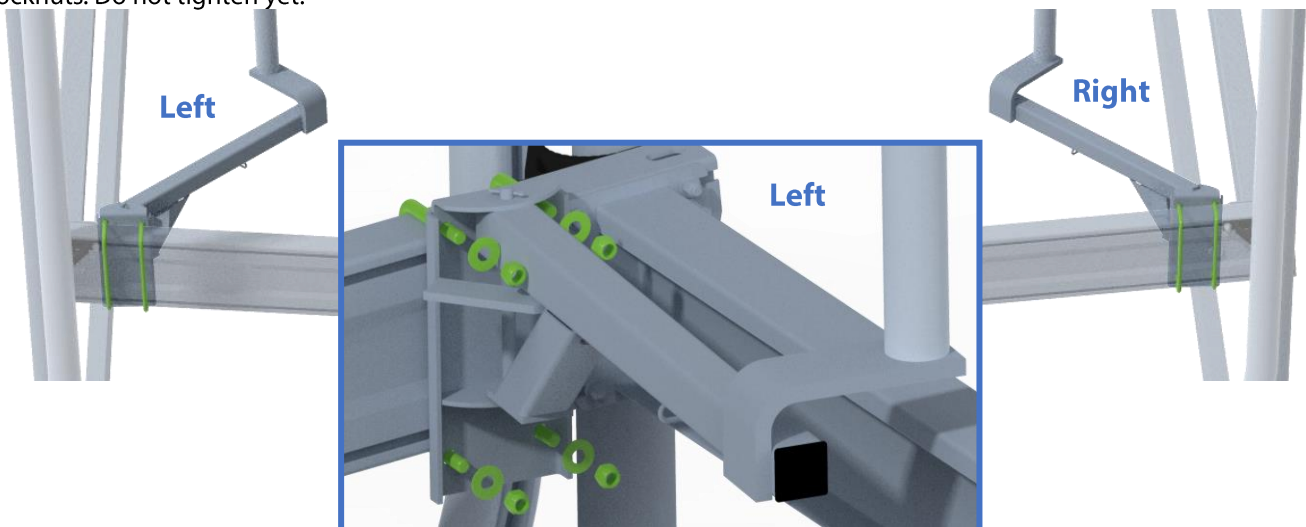


Slide the pulley weldment on the carriage bolts with the hex heads facing up. Add the washers and locknuts to the carriage bolts. Tighten the locknuts.



2 – Attach Guides

The brackets are mounted next to the I-beams with the right guide on the right side and left guide on the left side as shown below. They connect by putting U-bolts around the cradle and through the brackets. Add the fitting washers and locknuts. Do not tighten yet.



3 – Attach Spring

Hook the spring on the Right bracket as shown below.



4 – Cable Connections

Hook the spring to the cable loop in the middle of the cable as shown below.



Connect a quick link to the swing arm and connect the chain to the quick link. Repeat on the other side. Tighten each chain until there's good tension and close the quick link.

