

AMS WIRING DIAGRAMS



The following diagrams are for informational purposes only and are the only motor/control types that AMS carries. If you cannot find the correct diagram below, then the motor/control was not sold by AMS and we will not be able to help with getting it connected. The motor diagrams following are based on how AMS wires the switch. If you are replacing a motor, open the existing switch and make sure it is wired as shown below first. All diagrams show a 5-conductor cable connecting the motor to the control containing the following colors: Black, White, Red, Orange & Green



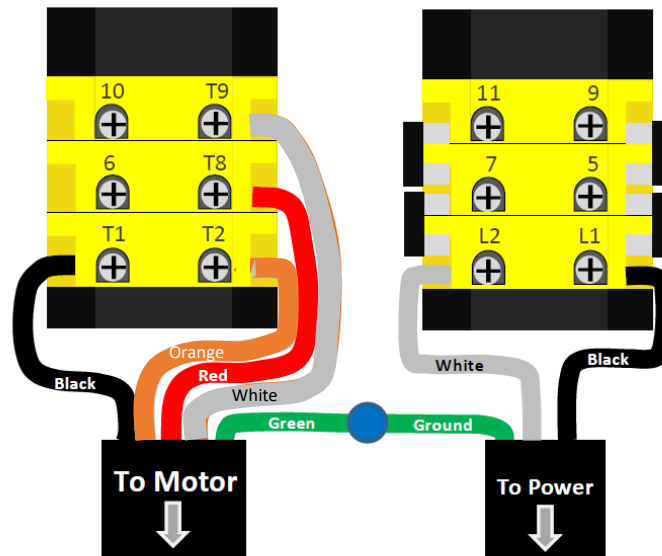
ELECTROCUTION HAZARD

These diagrams are for informational purposes only. All electrical installation or maintenance should be only completed by a licensed electrician. AMS is not responsible for injury due to improper installation. Damage caused as a result of incorrect wiring is not covered under warranty. Turn power OFF when working on any electrical components. Make sure a GFCI is used in the circuit.

AMS REVERSING SWITCH

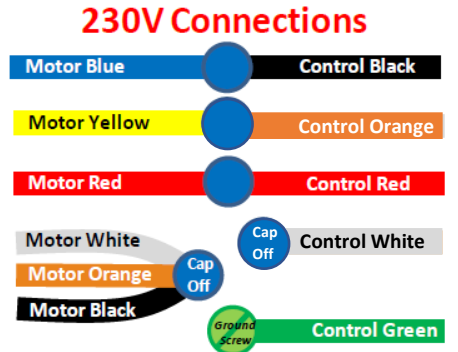
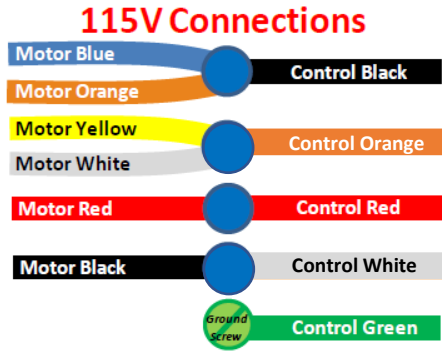
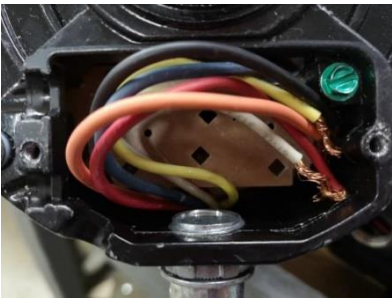
This is the standard control used by AMS. It is wired the same way for both 115V and 230V* applications. All motor diagrams shown hereafter are based on your control being wired based on this diagram.

- DO NOT MOVE/REMOVE THE JUMPERS FROM THE SWITCH CONTACTS
- *WHITE WIRE NOT NECESSARY FOR 230V CONNECTIONS AS IT IS CAPPED OFF IN THE MOTOR



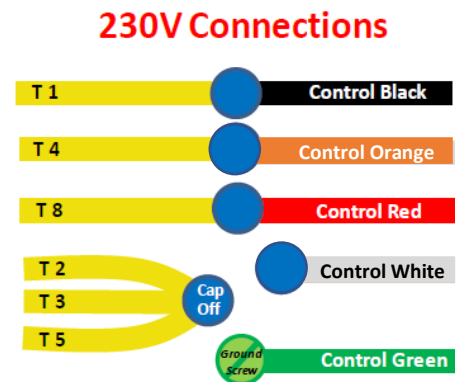
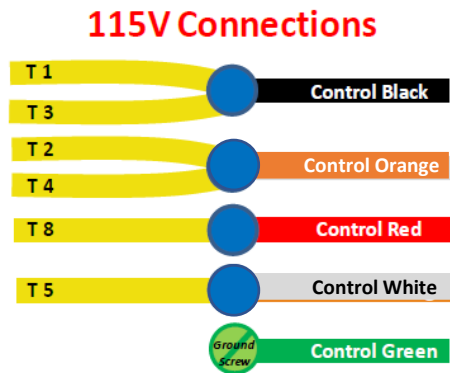
MOTOR – COLOR CODED WIRE-TO-WIRE 56 Frame

This diagram applies to any AMS 56 frame motor with 6 colored leads.



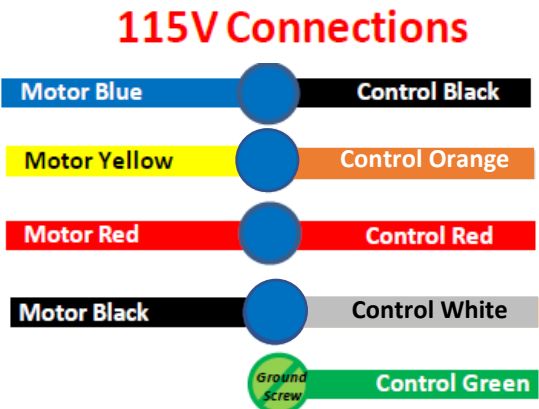
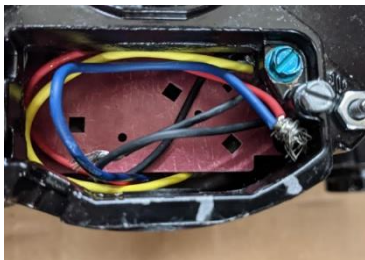
MOTOR – YELLOW T# WIRE-TO-WIRE

This diagram applies to any AMS 56 frame motor with 6 yellow T# leads.



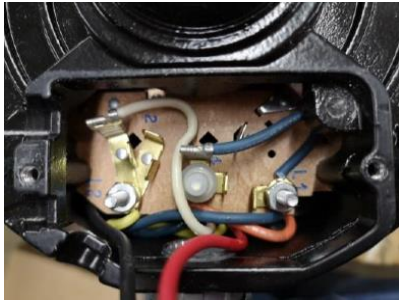
MOTOR – COLOR CODED WIRE-TO-WIRE 48 Frame

This diagram applies to any AMS 48 frame motor with 4 colored leads. 115V ONLY

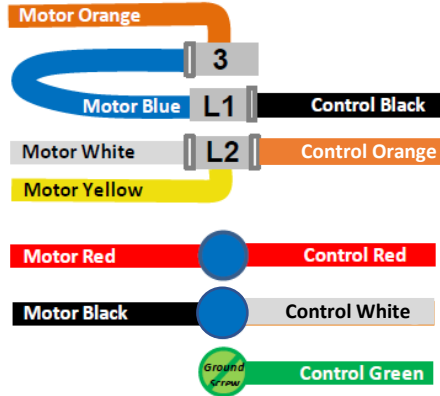


MOTOR – Terminal Board 56 Frame

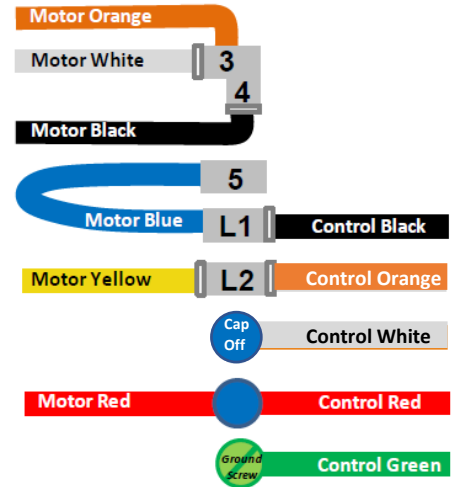
This diagram applies to any AMS 56 frame motor with a terminal board.



115V Connections

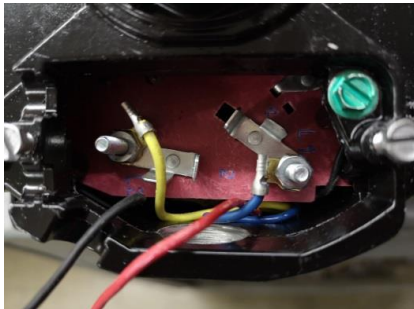


230V Connections



MOTOR – Terminal Board 48 Frame

This diagram applies to any AMS 48 frame motor with a terminal board. 115V ONLY



115V Connections

