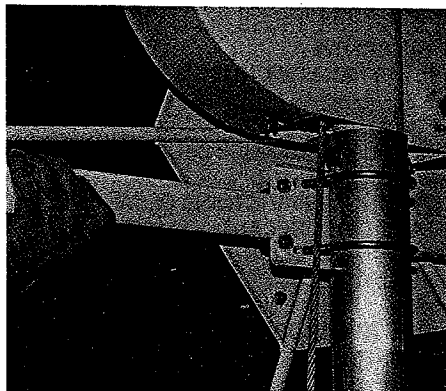


Shore Station

SSDC2 INSTALLATION INSTRUCTIONS

Your new Shore Station SSDC2 12 Volt Drive is universal and will fit most boat hoists manufactured that are equipped with a large hand wheel.

SHORE STATION ALUMINUM MODELS



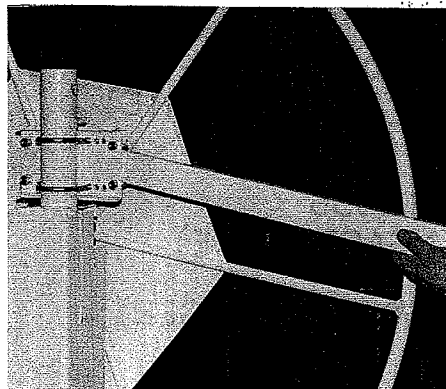
1. Position the mounting bracket (Ref. #29) with the notch on the upright post just below the winch case. Secure to post with large $\frac{3}{8}$ " (Ref. #3) round U-bolts and lock nuts (Ref. #10). Tighten to hold in position.

2. Insert $\frac{3}{8}$ " square U-bolts (Ref. #4) into mounting bracket and secure with $\frac{3}{8}$ " lock nuts (Ref. #10). Slide aluminum spacer bar (Ref. #17) into square U-bolts.

3. Fasten mounting arm (Ref. #8) to drive unit with $\frac{5}{16}$ " x 1" head bolts and $\frac{5}{16}$ " lock nuts. Slip mounting arm into $\frac{3}{8}$ " square u-bolts making sure the aluminum spacer bar is behind the mounting arm. Operate level to place motor and pulley into the disengaged position. With motor in the disengaged position, slide the mounting arm through the U-bolts with the motor positioned to the right as you face the hand wheel until there is approximately $\frac{1}{2}$ " clearance between the outer most diameter of the large hand wheel and the bottom of the pulley groove. Tighten the $\frac{3}{8}$ " square U-bolts. (**NOTE:** The bracket installed in Step 1 may need to be rotated on the upright post so the large hand wheel and pulley groove align with one another.)

4. Engage the grooved pulley with the hand wheel. If pulley and hand wheel do not contact sufficiently the complete unit can be moved closer to the hand wheel by loosening $\frac{3}{8}$ " square U-bolts in Step 3, then repositioning and tightening.

SHORE STATION STEEL MODELS



1. Position the mounting bracket (Ref. #29) with the notch on the tube above the winch case. Secure with small $\frac{3}{8}$ " round U-bolts and lock nuts (Ref. #10).

2. Insert the $\frac{3}{8}$ " square U-bolts (Ref. #4) into mounting bracket and secure with $\frac{3}{8}$ " lock nuts

(Ref. #10). Slide aluminum spacer bar (Ref. #17) into square

U-bolts.

3. Fasten mounting arm (Ref. #8) to drive unit with $\frac{5}{16}$ " x 1" head bolts and $\frac{5}{16}$ " lock nuts. Slip mounting arm into $\frac{3}{8}$ " square u-bolts making sure the aluminum spacer bar is behind the mounting arm. Operate toggle to place motor in the disengaged position. With the motor positioned to the left as you face the hand wheel, the motor positioned below the mounting arm, slide the mounting arm through the U-bolts until there is approximately $\frac{1}{2}$ " clearance between the outer most diameter of the large hand wheel and the bottom of the pulley groove. Tighten $\frac{3}{8}$ " square U-bolts. (**NOTE:** The bracket installed in Step 1 may need to be rotated on the upright post so the large hand wheel and pulley groove align with one another.)

4. Engage the grooved pulley with the hand wheel. If pulley and hand wheel do not contact sufficiently the complete unit can be moved closer to the hand wheel by loosening $\frac{3}{8}$ " square U-bolts in Step 3, then repositioning and tightening.

INSTALLATION ON OTHER MAKES OF HOIST

Other additional steps may be necessary to install on other brands of hoist.

IMPORTANT!

POWER SOURCE: Your new SSDC2 Drive is powered by a standard 12 volt battery. You may use either the battery in your boat or a separate battery on the dock for your power source. The power cord provided should accommodate either application. Preferably it would be powered by a quality marine style battery. Attach the fused side of the power cable to the positive post of the battery. Attach the other (black) wire to the negative post.

The two harnesses connect to each other by plugging together with quick coupling provided.

OPERATING INSTRUCTIONS

Before operating your new SSDC2 drive read and understand the following instructions.

TO LOWER LIFT:

1. Connect drive motor pigtail to 12V DC source.
2. Engage drive motor wheel to lift wheel by moving lever in direction of arrow until lever stops.
3. Hold toggle switch in "DOWN" position lowering hoist until boat floats freely above platform.



CAUTION: DO NOT CONTINUE TO LOWER PLATFORM AFTER BOAT FLOATS FREELY. CABLE DAMAGE MAY RESULT.

NOTE: To conserve power it is recommended that the drive motor wheel be disengaged and the hoist platform be lowered manually with the lift wheel.

SSDC2 12 VOLT DRIVE MATERIAL LIST:

REF.#	PART#	DESCRIPTION	QTY.	REF.#	PART#	DESCRIPTION	QTY.
1	0110020	1/4" X 3/4" HEX BOLT	5	28	62252	BLUE COVER W/VELCRO	1
2	0140022	5/16" X 3/4" HEX BOLT	3	29	6168501	HOIST MOUNTING CHANNEL	1
3	0310097	3/8" X 4-5/8" ROUND U-BOLT	2	30	6371401	ACDC 7 GAUGE CARRIAGE	1
—	0310051	3/8" X 3-1/4" ROUND U-BOLT (OPTIONAL) .	2	31	6473501	MOTOR MOUNTING BRACKET WELDMENT	1
4	0310106	3/8" X 1-3/4" SQUARE U-BOLT	2	32	6371001	MOTOR MOUNTING ARM - 12 VOLT DRIVE-	
5		1/4" X 1" STEEL SET SCREW; ALLEN	1			WHITE	1
6	0810921	3/4" SLOTTED SHEET METAL SCREW	2	33	62111	POWER CORD 21-1/2'	1
7	0140090	1/2" X 1" HEX BOLT	1	34	62312	POWER CORD 1-1/2'	1
8	1310020	1/4" LOCK WASHER	1	35	3510170	NATURAL COLOR PLUG	1
9	1410049	1/4" HEX NUT	1	36	1440102	1/2" - 13 SMALL FLANGE LOCK NUT	1
10	1440101	3/8" FLANGE LOCK NUT	8	37	5310215	AMP CONNECTOR #10 GRAY	2
11	6370801	14 GAUGE COVER PLATE - WHITE	1	38	5310214	CRIMP RING TONGUE	1
12	6370901	ENGAGE LEVER - 10 GAUGE - WHITE	1	39	5310207	12-10 WIRE RING WITH 3/8" STUD	1
13	2121216	5/8" OD X 5" EXTENSION SPRING	1	40	5310208	FEMALE DISCOUNT VINYL INSULATOR ...	4
14	3820049	#9 STEEL WIRE ENGAGE LINK	1	41	0730102	#10 X 1/2" PHIL TRUSS HEAD SHEET	
15	5310019	12 VOLT ELECTRIC MOTOR	1			METAL SCREW	2
16	5310205	3" JESSCO BOX #2000	1	42	1410079	5/16" - 18 HEX LOCK NUT	3
17	5310209	55046 SWITCH BOOT #81264	1				
18	5310210	FUSE PLATE	1				
19	5310211	1/4" FUSE PLATE	1				
20	5310212	15A 120V AC SWITCH #55046	1				
21	5310213	12V FUSE - #301037-30	2				
22	3510189	BLACK PLALSTIC HANDLE COVER	1				
23		3/16" HALF MOON KEY	1				
24	3510030	7/8" MOLDED GROMMET	1				
25	63711	1/2" X 2" X 8" ALUMINUM SHIM	1				
26	4312000	ELECTRIC DRIVE WHEEL AND TIRE	1				
27	4811338	1" BACK WASHER	1				

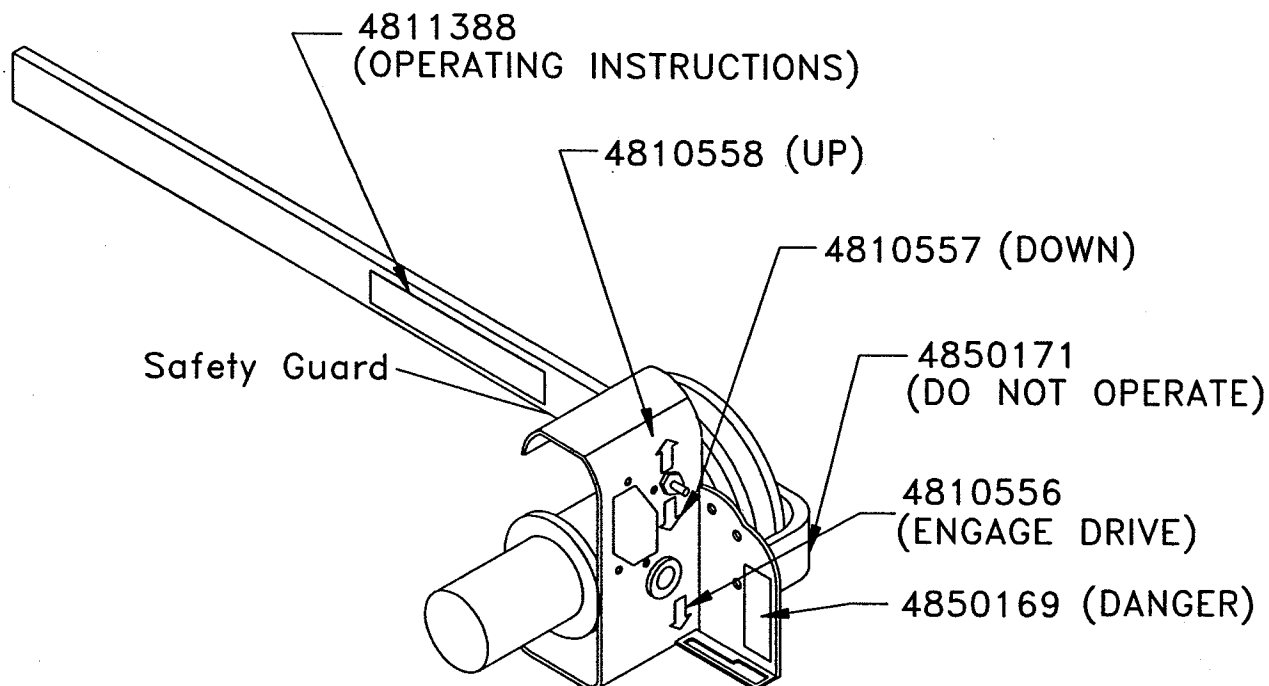
DECALS:

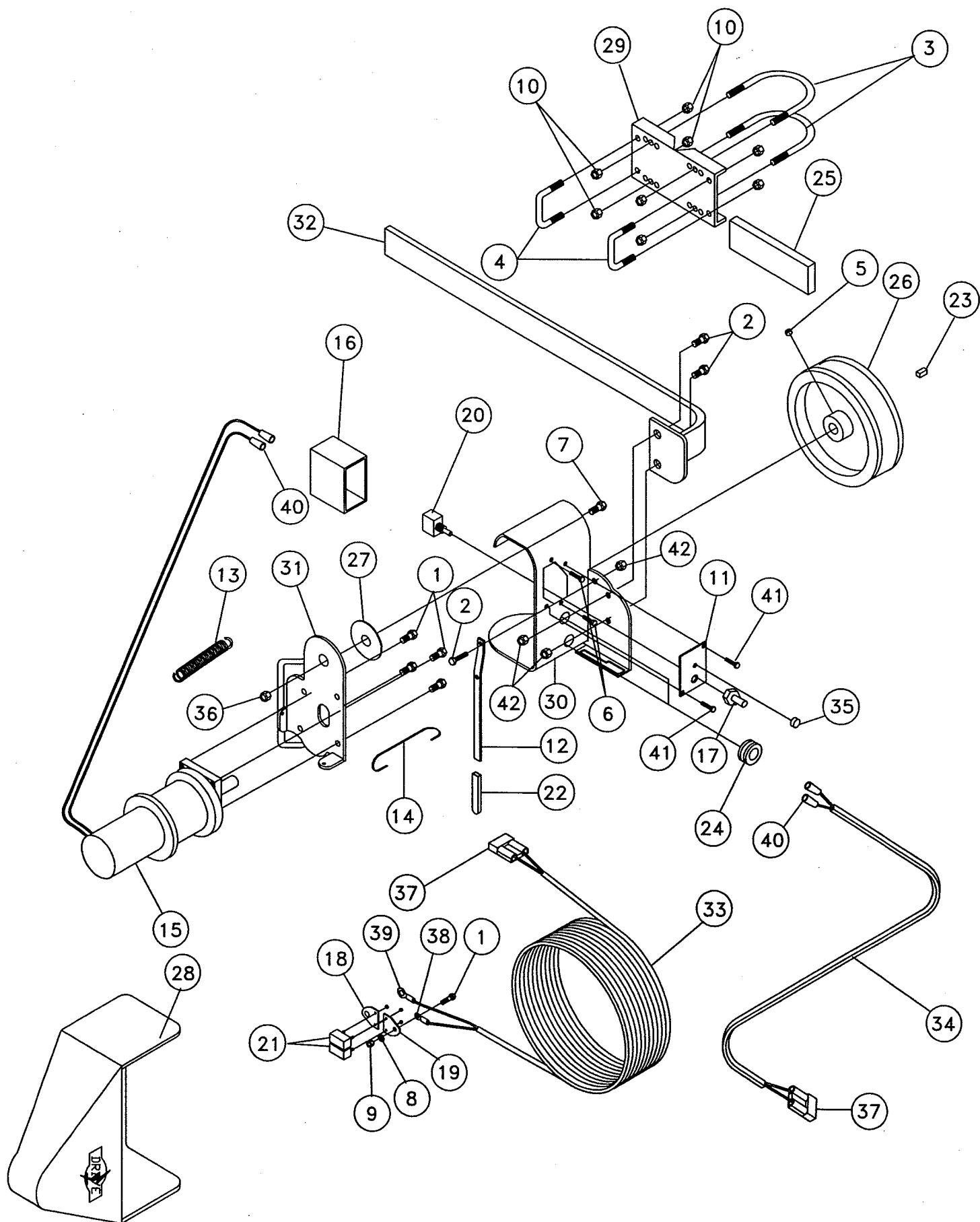
—	4850171	INSIDE PULLEY DANGER DECAL	1
—	4850169	DANGER DECAL	1
—	4811388	OPERATING INSTRUCTIONS DECAL	1
—	4810556	ENGAGE DRIVE DECAL	1
—	4810557	DOWN ARROW DECAL	1
—	4810558	UP ARROW DECAL	1
—	6371501	DC ELECTRICAL DRIVE ASSEMBLY	1
—	6170201	HARDWARE BAG - 12V DRIVE	1

12 VOLT SSDC2 AMP & TORQUE INFORMATION

	RPM	AMP	TORQUE IN LBS.
No. Load	273	11	0
Design Load	199	38	110

DECAL INSTALLATION





TO RAISE LIFT:

1. Using the hoist lift wheel, manually raise the hoist platform to contact bottom of the boat so it is no longer floating.
2. Connect drive motor pigtail to 12V SSDC2 source.
3. Engage drive motor wheel to lift wheel by moving lever in direction of arrow until lever stops.
4. Hold toggle switch in the "UP" position until the hoist platform and boat are at the desired height. To stop movement at any time simply release toggle switch.

WARNING: Do not hold toggle switch in "UP" position once platform has reached the top

-- this could cause damage to the hoist and to your drive motor!

WARNING: Keep hands and loose clothing away from drive wheel when operating - personal injury could occur from contact with moving parts.



CAUTION: DO NOT OPERATE THIS UNIT FROM INSIDE BOAT OR HOIST!

WARNING: For protection of others, always disconnect power source when hoist is left unattended.