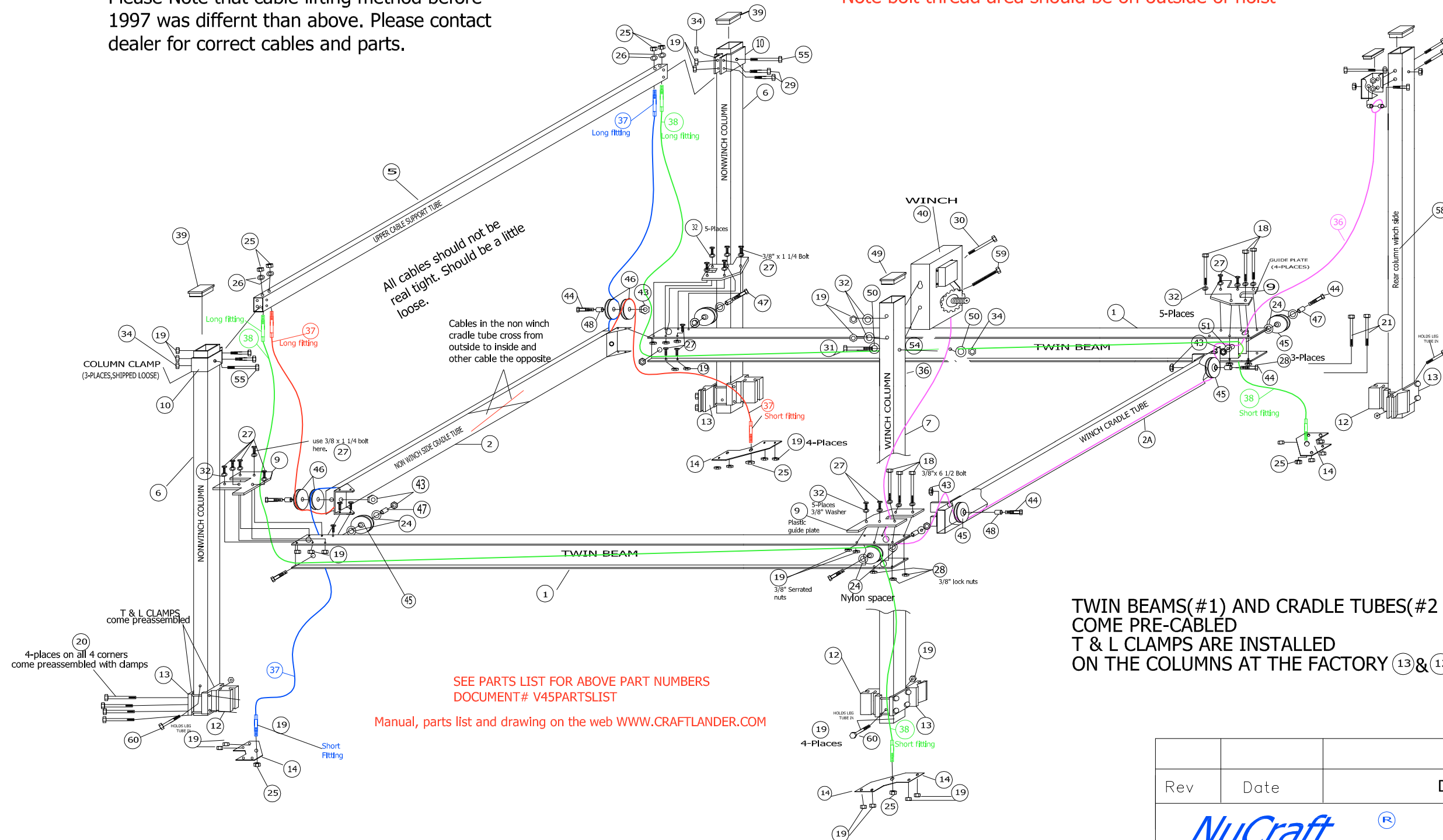




Please Note that cable lifting method before 1997 was different than above. Please contact dealer for correct cables and parts.

READ MANUAL BEFORE USING HOIST.  
Note bolt thread area should be on outside of hoist



All cables should not be real tight. Should be a little loose.

Cables in the non winch cradle tube cross from outside to inside and other cable the opposite

SEE PARTS LIST FOR ABOVE PART NUMBERS  
DOCUMENT# V45PARTSLIST

Manual, parts list and drawing on the web [WWW.CRAFTLANDER.COM](http://WWW.CRAFTLANDER.COM)

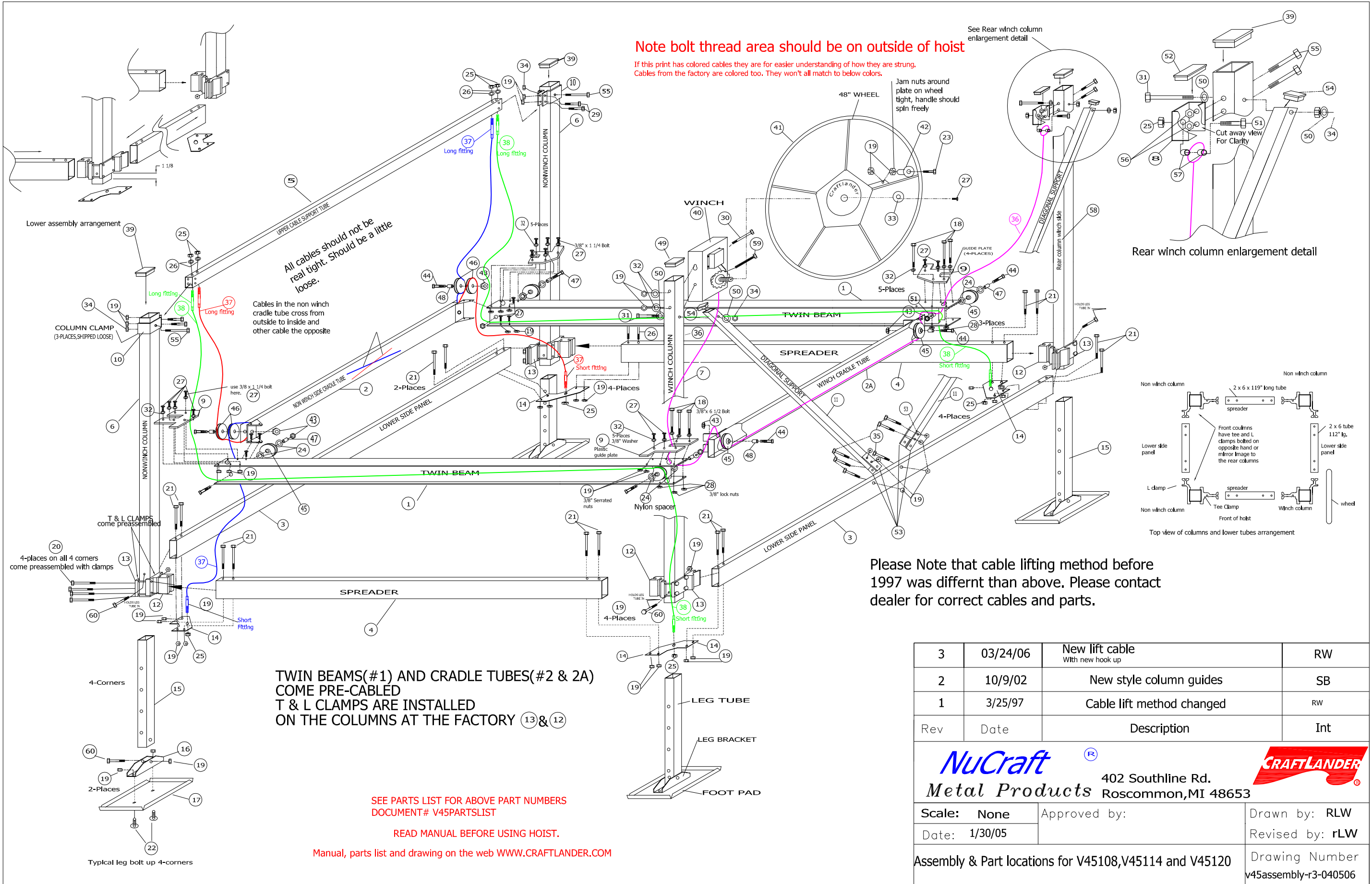
TWIN BEAMS(#1) AND CRADLE TUBES(#2 & 2A)  
COME PRE-CABLED  
T & L CLAMPS ARE INSTALLED  
ON THE COLUMNS AT THE FACTORY (13 & 12)



Use ruler to measure nuts and bolts

# Inner Frame Assembly

Rev	Date	Description	Int
		 <b>NuCraft</b> ® Metal Products	 402 Southline Rd. Roscommon, MI 48653
Scale:	None	Approved by:	Drawn by: RLW
Date:	7/28/06		Revised by: rLW
Assembly & Part locations for V45108, V45114 and V45120			Drawing Number v45innerframeassembly 7-28-06



**Note bolt thread area should be on outside of hoist**

If this print has colored cables they are for easier understanding of how they are strung. Cables from the factory are colored too. They won't all match to below colors.

All cables should not be real tight. Should be a little loose.

Cables in the non winch cradle tube cross from outside to inside and other cable the opposite

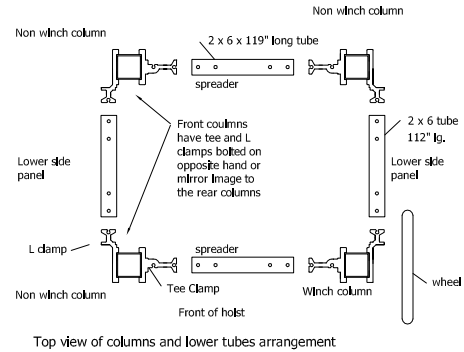
Please Note that cable lifting method before 1997 was different than above. Please contact dealer for correct cables and parts.

TWIN BEAMS (#1) AND CRADLE TUBES (#2 & 2A) COME PRE-CABLED  
T & L CLAMPS ARE INSTALLED ON THE COLUMNS AT THE FACTORY (13 & 12)

SEE PARTS LIST FOR ABOVE PART NUMBERS  
DOCUMENT# V45PARTSLIST

READ MANUAL BEFORE USING HOIST.

Manual, parts list and drawing on the web WWW.CRAFTLANDER.COM



Rev	Date	Description	Int
3	03/24/06	New lift cable With new hook up	RW
2	10/9/02	New style column guides	SB
1	3/25/97	Cable lift method changed	RW

<b>Metal Products</b>		402 Southline Rd. Roscommon, MI 48653	
Scale: None	Approved by:	Drawn by: RLW	
Date: 1/30/05		Revised by: rLW	
Assembly & Part locations for V45108, V45114 and V45120			Drawing Number v45assembly-r3-040506