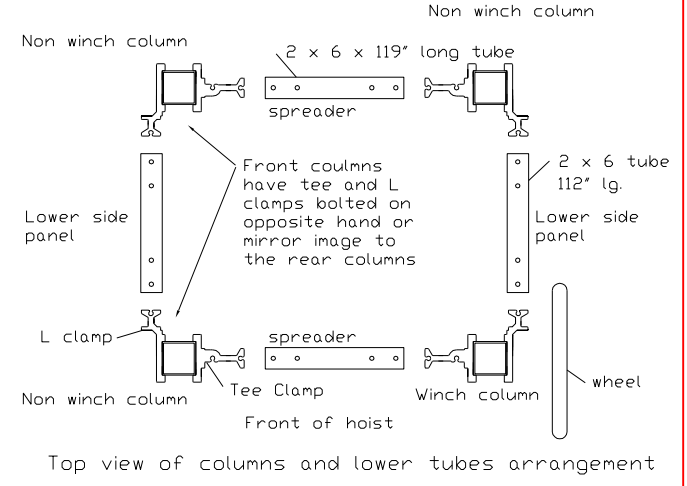
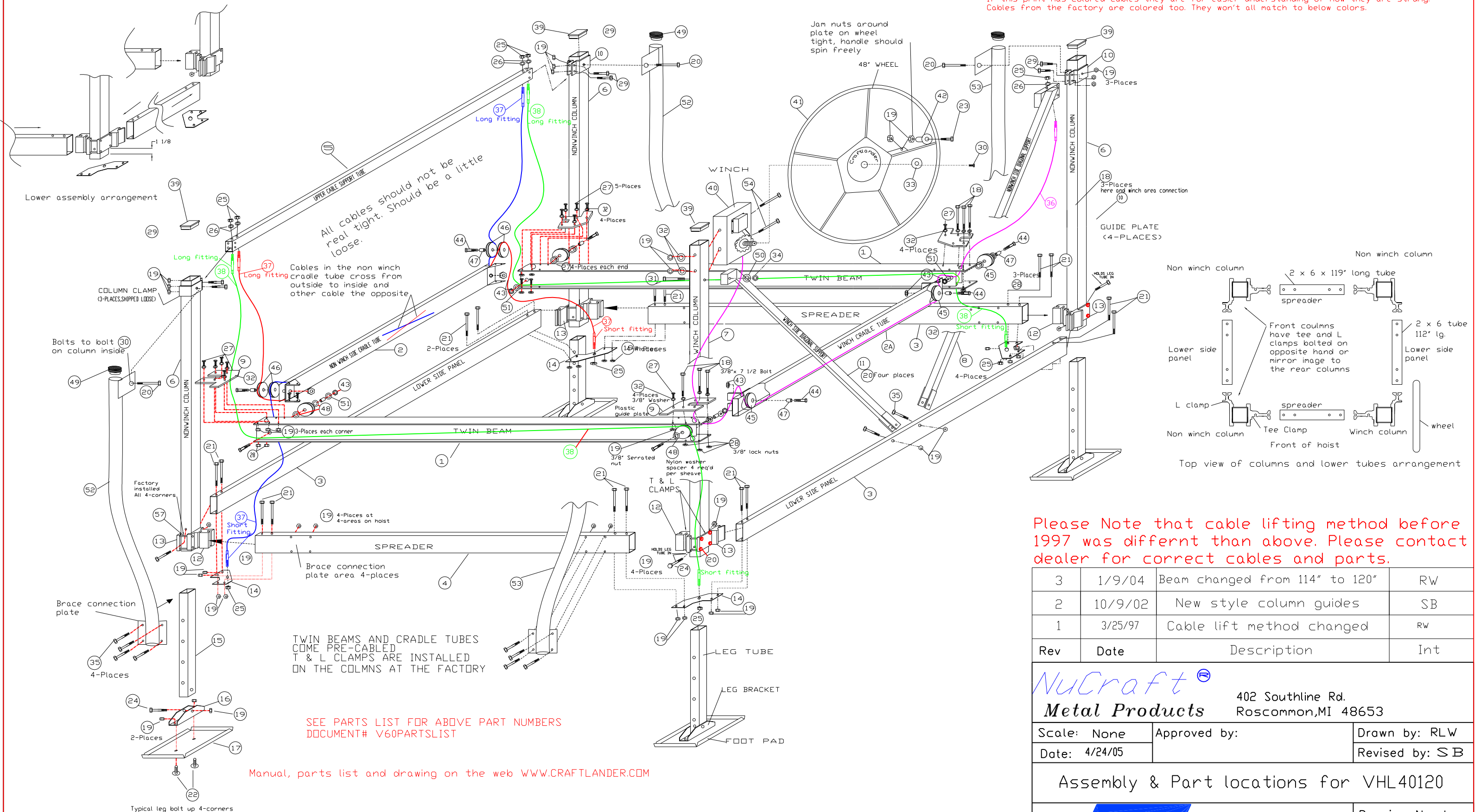


READ MANUAL BEFORE USING HOIST.

Note bolt thread area should be on outside of hoist

If this print has colored cables they are for easier understanding of how they are strung. Cables from the factory are colored too. They won't all match to below colors.



Please Note that cable lifting method before 1997 was different than above. Please contact dealer for correct cables and parts.

Rev	Date	Description	Int
3	1/9/04	Beam changed from 114" to 120"	RW
2	10/9/02	New style column guides	SB
1	3/25/97	Cable lift method changed	RW

NuCraft®
Metal Products 402 Southline Rd.
 Roscommon, MI 48653

Scale: None Approved by: Drawn by: RLW
 Date: 4/24/05 Revised by: SB

Assembly & Part locations for VHL40120

CRAFTLANDER Drawing Number
 V40HLassembly

TWIN BEAMS AND CRADLE TUBES COME PRE-CABLED T & L CLAMPS ARE INSTALLED ON THE COLUMNS AT THE FACTORY

SEE PARTS LIST FOR ABOVE PART NUMBERS DOCUMENT# V60PARTSLIST

Manual, parts list and drawing on the web WWW.CRAFTLANDER.COM

Lower assembly arrangement

All cables should not be real tight. Should be a little loose.

Cables in the non winch cradle tube cross from outside to inside and other cable the opposite

Jam nuts around plate on wheel tight, handle should spin freely

GUIDE PLATE (4-PLACES)

Non winch column
 2 x 6 x 119" long tube spreader
 Front columns have tee and L clamps bolted on opposite hand or mirror image to the rear columns
 2 x 6 tube 112" lg.
 Lower side panel
 L clamp spreader
 Tee Clamp
 Winch column wheel
 Top view of columns and lower tubes arrangement

Bolts to bolt on column inside

Brace connection plate

Typical leg bolt up 4-corners

Lower assembly arrangement

Bolts to bolt on column inside

Brace connection plate

Typical leg bolt up 4-corners