

Stair Assembly Instructions - Page 3



Step Six

After you have uprights in place you know can install bent handrails. Install the lower bent handrail in first. Insert one end into the pocket of lower handrail upright. Then apply slight outward pressure on top of handrail and spread apart to slip other end into pocket. Repeat this process on top bent handrail.



Extra Views Step 6

After you have inserted all bent hand rails in pockets you can then install #14 self tapping screws with a battery or electric drill using a #3 Phillips bit. Tighten screws until you feel bent hand rail seat itself against back wall of upright tubes.



Step Seven

After Handrail is installed you can know install non-handrail lower collar sleeve. This sleeve is necessary when optional second handrail assembly is not purchased. Pop plastic cap out and save for a spare it is not necessary for lower leg because leg itself is capped. Align hole the same as you did on handrail upright allowing room for leg to insert. You can know install leg.



Extra Views Step 7

Again do not over tighten leg and make final adjustment in the water. Inset picture shows the bottom starboard leg with cap. You can know finish tightening 3" bolt to secure top handrail upright. It will pinch handrail upright to collar side.



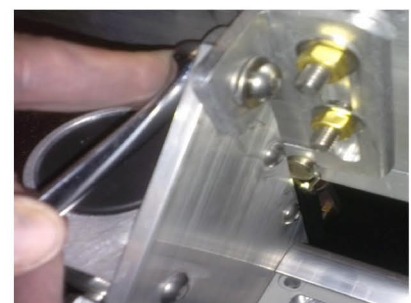
Step Eight

Install the last collar sleeve in upper open step handrail collar. Tighten the last 1/2" handrail collar bolt with you 3/4" end wrench. At some point if you purchase optional rear leg kit and or optional second hand rail assembly, you then would assemble as you did starboard handrail assembly. You can know mount step to dock or seawall using step mounting kit.



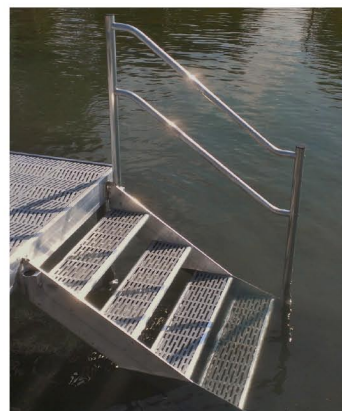
Extra Views Step 8

Measure down from the top of mounting surface 3-3/8" and drill a 3/8" hole. Then measure up 1- 1/2" and drill second 3/8" hole. Mount your left or port bracket. You can face head of 5/16" button head in or out depending on your application. Measure over from center of bottom hole 34 1/4" mark hole placement 3-3/8" down and drill holes for starboard bracket. Mount Starboard bracket.



Step Nine

Slide Step into position and install the last two 5/16" button heads to secure the step to your dock or seawall. Adjust bottom legs to level step and your installation should know be complete.



Stairs Complete

Additional handrails install the same as the first set. Please do not hesitate to contact us with any questions.

866-942-6349
info@boatliftanddock.com